

## All Ocean Yachts 90' Steel



### 90' (27.4 m) ALL OCEAN YACHTS

**LOA:** 90' (27.4 m)  
**Beam:** 24'2" (7.4 m)  
**Draft:** Max 8' (2.4 m)  
**Speed:** 10 knots  
**Location:** Fortaleza, Brazil

**Year:** Mfg-2012 Model-2012  
**Mfg:** ALL OCEAN YACHTS  
**Type:** Expedition Yacht  
**Price:** 7,480,000 USD

## Additional Specifications For All Ocean Yachts 90' Steel:

---

<b>LOA:</b>	90' (27.4 m)	<b>Year:</b>	Mfg-2012 Model-2012
<b>Mfg. Length:</b>	78' (23.8 m)	<b>Mfg:</b>	ALL OCEAN YACHTS
<b>LWL:</b>	78' (23.8 m)	<b>Model:</b>	Tri - Deck Explorer Yacht
<b>Beam:</b>	24'2" (7.4 m)	<b>Type:</b>	Expedition Yacht
<b>Draft:</b>	Max 8' (2.4 m)	<b>Top:</b>	With Flybridge
<b>Hull Mtrl:</b>	Steel		Hardtop
<b>Hull Cnfg.:</b>	Full Displacement	<b>Speed:</b>	10 knots
<b>Hull Designer:</b>		<b>Engines:</b>	2xCaterpillar
<b>Deck Mtrl:</b>			C18 A rated 450 BHP
<b>Disp:</b>	219541 lb (99583 kg)	<b>Engines Year:</b>	
<b>Range:</b>	4000	<b>Staterooms:</b>	4
<b>Fuel Cap:</b>	9800 g (37093 l)	<b>Sleeps:</b>	10
<b>Water Cap:</b>	3000 g (11355 l)	<b>Heads:</b>	8
<b>Holding Tank:</b>	854 g (3232 l)	<b>Crew Quarters:</b>	2
<b>Flag:</b>	n/a	<b>Crew Berths:</b>	4
<b>Classifications:</b>	R.I.NA	<b>Crew Heads:</b>	2
<b>Class Type:</b>		<b>Captain Cabin:</b>	Yes
<b>MCA:</b>	Yes	<b>Price:</b>	7,480,000 USD
<b>ISM:</b>			
<b>Location:</b>	Fortaleza, Brazil		

---

### Accommodations

The tremendous response we have had from the yachting public, owner's and professionals has led us to the conclusion that we needed a standard layout and then several optional layouts to meet all of the requirements we received information on.

The lower deck layout stays the same in all of the arrangements, though there are options for Pullman berths and sliding single bunks to form doubles. The standard main deck layout has the master cabin on the main deck and enclosed galley. The next arrangement is exactly the same but with the option to have a sliding panel between the galley and the dining area to make an open galley format. There is a change in the one of the refrigerators, the oven layouts and china cabinet to create a fully open format.

Both of these layouts can also be done with the "Captains cabin" up option, which would give you the option to carry up to 6 crew or have a dedicated cabin for fishing guides, scuba guides or other extra personal. You still maintain a comfortable skylounge with this option with the convertible settee and full head and shower to give you the 5th stateroom.

The other layout options are created if you take the "master Cabin Up" option which puts the

master behind the wheelhouse. The impressive thing about this layout is that you have almost all of the features you find in the main deck cabin, the same amount of storage and hanging locker space. An option to have a tub/shower combination and private toilet room.

The master up then gives you several other options for the Main Deck.

You can have a large TV/Lounge with a fold out queen settee and full head maintaining your 5th guest option. This then would allow you to create a bar/game room where the Aft Saloon is or keep the Saloon and have two lounging areas. You also have a large office area.

Another option is to have a full country kitchen with extra large additional pantry, informal dining/breakfast table. You still maintain the separate formal dining area; again you have a good office space.

## **Accommodations Walkthrough**

Starting on the Lower deck forward;

The crew's quarters are forward with Captains cabin to the port side with double bunk with draws under it, there is a full height hanging locker with draws below, side table with draws, storage shelves and TV. Forward of this is an ensuite head with shower, toilet and sink. There is an option for a second bunk in this cabin.

To starboard is a crew cabin with upper and lower bunks, two hanging lockers and a chest of draws, there are also draws under the lower bunk. Forward is a head that is identical to the one in the captain's cabin. There are escape hatches located in both heads and TVs located in both cabins.

Going aft through the watertight door is a corridor and stairs up to the galley, to port is the door to the crew lounge which leads to the separate laundry room.

The crew lounge has a large settee with a table that fold down to form a large bunk. The idea behind this feature is on those occasions when you either need extra crew or when you have a fishing guide or diving guide onboard you can accommodate them in the crew's area. They can utilize the crew head during the day and the main deck head at night. The settee has storage under it.

The lounge has an under counter refrigerator, sink, microwave oven, and TV/Monitor.

Aft of the lounge, is the full size laundry with extensive storage. There are two full size LG washers and two full size LG ventless dryers. There is ample counter space for pressing machines and an ironing board. A hatch is located in the over head size to allow removal of the washer and dryers.

There is a service door from the laundry to the guest areas, allowing the crew to clean up the

area and attend to the cabins without interfering with the guests.

The lower guest accommodations consist of two double staterooms with two lower full size single bunks with ensuite heads and showers. There is the option to put Pullman berths in both of these staterooms and to have the inside bunk slide out board to form a queen bed against the wall. Each cabin has a large hanging locker with drawers; drawers are also located under each of the beds. There is additional storage built in under the stairs. Both staterooms have escape hatches.

Forward to starboard is a full walk around queen guest cabin with large hanging locker with drawers. Drawers are also located under the bed. There is an ensuite head with a shower. The bulkhead between the laundry/queen stateroom and the twin staterooms is water tight. There are two sets for doors for the queen and laundry, one is a standard door and the second is a watertight door that sits in a pocket.

The centerline stairs lead from the lower foyer aft up to the main deck foyer.

The main deck foyer separates the aft main saloon and the formal dining area. There is a door to the side deck, dayhead, and wet locker.

Forward on the main deck on the standard layout is the FULL BEAM MASTER STATEROOM.

The master stateroom is lighted by two large windows bringing in abundant natural light which enhances the feeling of space created by the 24'2" beam.

On entering to starboard is a 7' L shaped settee with which is set against the windows creating the feeling that you are directly connected with the outside. The King size bed is located just off centerline on the portside with built in pop up TV at the foot of the bed. The position of the bed takes full advantage of the stunning view the port and starboard windows offer. There are drawers located under the bed and a large desk positioned in front of the portside windows. Forward of the bed to port and starboard are matching walk in closets with hanging area and drawers. The large head is located centerline with his and her sinks, over sized shower, separate toilet room with bidet. There is also a 3rd stacked washer dryer and linen closet.

The bulkhead between the master stateroom and the galley and dining area is steel with sound insulation both for fire protection and privacy. There is an escape hatch from the master to the boat deck.

Aft of the master stateroom to Starboard is the separate dining room for 8 to 10 guests. The dining area has direct service from the large commercial style galley. The area has full advantage of the two large windows to create an open airy feel.

The very large professional galley is laid out to maximize efficiency in gourmet cooking and high end service. The Chef has her own working zone that includes large counter spaces, 6 burner cook top with vent, full size fridge, two ovens, standard dishwasher, double sink with disposal and microwave oven. The stewardess has her own zone, with full size fridge, double freezer, trash compactor, double sink with disposal and a 3 minute dishwasher. The galley has

granite counter tops through out.

There is a large pantry in the stewardess area and a china cabinet/pantry located near the door to the galley and saloon. This cabinet holds the wine cooler and has dual doors allowing the china to be filled from the galley side and removed from the dinning saloon side. There is a door from the galley directly to the side deck.

The stairs from the crews quarters land in the galley and allow the crew to move from there to all of the exterior areas and the pilothouse without crossing into the guest areas. The steps to the pilothouse are positioned near the galley door to the saloon. This allows the crew to go directly from the galley to the pilothouse with minimal intrusion into the guest area.

A great deal of work was done to insure that the crew can move about the boat during all types of operation without interfering with the guests and to make it very efficient for them to serve the guest and maintain the vessel.

These qualities also enhance the operational abilities of the vessel when she is being operated by the Owner with a limited crew or friends and family.

Aft of the main Foyer is the main saloon; there is a large L shape settee, comfortable chairs and a pop up TV. This area can easily accommodate 10 guests. The ample window space brings in light and creates a wonderful environment for socializing and relaxing.

Aft of the main saloon is one of three out door dinning and relaxing areas. There is a table for 8 to 10 persons an wet bar with sink, refrigerator and trash bin. There are stairs leading down to the swim platform with access to the lazarette and engine room. There is also a door directly from the aft deck to the engine room and stairs leading up to the aft bridge deck. The two side walk ways lead forward to steps up to the pilothouse and boat deck. There are two cleats and a warping windless port and starboard on the aft corners of the deck. They are located on a raised shelf to easy working the lines. The raised position reduces the need to bend over when line handling and allows you to keep better visual contact with the dock and cleats enhancing safety and ease of operation. The cleats located on the lower main deck are also raised for the same reasons.

Forward on the pilothouse / boat deck;

All the way forward is the anchor handling well. This area was created for a number of reasons. It again puts the cleats and anchor handling gear in a raise position for ease of operation. Even though the windlasses and chain sit in a stainless steel tray with their own drains the well assures that any mess will be confined to the working area. The shape acts as a trap for any see the comes over the bow helping to protect the tenders and ensures that the hatch to the chain locker is well above deck level.

Next aft is the boat deck which amazingly for a 90' vessel can carry two x 22' (6.6m) tenders or one large tender and a smaller one plus other water craft.

Three steps up from the boat deck brings you to the Portuguese bridge with wing stations to port and starboard that are set out to increase visibility and easy of handling. You can enter the large pilothouse from port or starboard. The pilothouse and Portuguese bridge are raised above the level of the boat deck to assure good visibility over the tenders and the boat. The large consol has ample space for all of the electronics and controls. There are two chart tables to port and starboard both of which are sized to accommodate a full size standard Admiralty chart. There is a large raised settee to port with granite top table. The settee is size so it can be utilized as a pilot berth when needed. To starboard aft is a large desk and radio area. The space under the raised pilothouse floor is utilized to hold the radio and navigation batteries and chargers, wire raceways, air ducts and other equipment freeing up space under the consol.

Aft and down two steps is the upper Foyer, to port is are the stairs leading from the dinning saloon, to starboard is a second day head with a shower. The foyer is separated from the wheelhouse and the skylounge by doors assuring that night operations can be properly maintained without in pinching on the guests.

The skylounge is HUGE; it is almost full beam, just allowing for proper service of the exterior windows. The large windows on three sides create panoramic views To port there is a full stand behind bar with bar stools, granite top, wine cooler, icemaker, refrigerator and sink. Aft of this is a settee and chairs, the settee folds out to a queen bed, combined with the full head, this creates the option to use this area as a 5th guest stateroom.

To starboard is an area for a gaming table and a built in desk. On the forward bulkhead between the door and bar is a space for a 47" TV.

Aft of the skylounge is the second out door lounging and dinning areas. There is a table for 8 to 10 people, set out on a balcony offering a stunning view. The settee has been sized so that it is comfortable for both dinning and lounging / sun bathing. There is ample space for lounge chairs. Forward to port is a large cabinet that holds additional chest freezers, one is designated as a food freezer and the other as a trash freezer. This is a point that is often missed on long distance cruising vessel. You can dispose of bio-degradable materials along the way but what do you do with other items that have been exposed to them. By using the trash compactor in the galley you can minimize the size of these materials and by freezing them you can keep them as long as necessary until you find a proper place to dispose of them. There is also space for storage of items needed for the deck.

Up the stairs from the aft pilothouse deck you will come to an extravagantly large flybridge that has all of the space and features found only on much larger vessels and the 3rd of the outdoor dinning and lounge zones. The Jacuzzi is aft and positioned to take advantage of the balcony, to next to it to port is an over sized raised sun pad which puts the people on the pad in a position to fully enjoy the views and communicate with people in the Jacuzzi. It also creates a huge storage area. To starboard is the BBQ with cabinet and good working counter space on either side. Forward of this is the full bar with refrigerator another ice maker, sink and storage. Across form the bar is the large dinning table which can easily comfortably accommodate 10 to 12 guests.

Next forward up two steps is a raised helm and seating area. The two settees to port and starboard are sized so they can also be used as day beds to relax in the shade and read or enjoy the enhanced viewing point. The centerline helm has space for all the controls and equipment and also enjoys an enhanced view. This area is fully covered by the hard top.

Optional layouts include the following:

**Captain's cabin up option:**

There is an option for a Captain's cabin up behind the wheelhouse. This cabin fits quite nicely into the space with minor rearranging of the wheelhouse and skylounge. In the wheelhouse we have split the large settee into a corner settee located on the starboard side and a raised seat behind the helm. We have moved the desk to the port side and increased its size.

The captain's cabin features a queen size bed, large hanging locker with draws in front and a full head and shower.

The only impact on the skylounge is you lose the stand behind bar. We replaced this with a full wet bar that has all of the equipment found in the stand behind bar. The fold out queen bunk still fits well.

**Galley options with master on main deck:**

The open galley option takes the wall between the dining saloon and the galley and changes it either into a permanent open area with a railing along the crew access stair or with a half height wall that hides a sliding panel. This is the preferred arrangement as it shuts the galley off when cleaning up or at other times when it may be better to control odors within the galley. The full height fridge and stacked ovens are rearranged to be an under counter fridge and under counter ovens. The china cabinet is stopped at counter height and there is a second cabinet above it which hides a fold down panel which fully closes off the galley.

**Owner's cabin behind the wheelhouse option:**

This option fits amazingly well into the skylounge space. There was no need to modify the wheelhouse layout. The largest difference is there is no walk in closets, however the total actual hanging locker and draw space is almost exactly the same. The king size bed is the same and there is a large raised settee to starboard. The master head has his and her sinks, a separate toilet room and either an extra large shower of a full size tub (Jacuzzi) / shower. The aft pilothouse deck now becomes a private deck for the owner. Depending on the layout chosen for the main deck, we have moved the two freezers down, which creates additional room for comfortable chairs or lounge chairs.

The owner cabin up layout creates the opportunity for 3 optional layouts for the main deck.

## **Main deck options with Master cabin up option:**

### Country kitchen option:

The country kitchen option creates 3 distinct dining options. You have the standard formal dining table to starboard of the galley, a large informal dining table that can easily all of the guests and all the crew and a breakfast bar. There is a full wet bar encompassing all the equipment that was located in the bar in the flybridge and a large desk / office area. In addition there is a VERY large pantry forward which now holds the two freezers from the pilothouse deck and the full size refrigerator. The trade of is the galley loses one oven, but the micro wave is also a full size convection oven but we gain extra refrigeration space by adding a under counter fridge for the chef and still having the full size refrigerator in the pantry.

With this layout you lose the option of having a 5th stateroom using a fold out settee.

The main saloon is maintained as it is on the standard layout.

### **TV / Lounge forward option:**

This option can be done with the standard close galley layout of the open galley layout.

What is created with this layout is a very large TV and reading lounge. The lounge contains a large U shaped settee that has a pull out queen bed, forward there is a full head with shower, large closet. A 62" TV can be mounted on the forward bulkhead. To starboard is a very large desk / office area and a raised settee set into the window to maximize the view. You can have a full wet bar to port or just a drinks refrigerator. Aft you can keep the standard saloon arrangement or create the 3rd option.

### Bar / Game room in aft saloon:

The aft saloon can be changed to have a large sit down bar with service directly from the galley. The bar is fully equipped per the skylounge bar. There is room for a large game table and comfortable chairs.

## **Built to**

- Location: Shipyard
- Model: Tri-deck Explorer yacht
- Type: Explorer Yacht
- Designer: Luiz deBasto
- Staterooms: 4/5
- Crews Quarters 2/3
- Berths: 4/5
- Captains cabin: yes
- Hull Mtrl: steel
- Hull Config: Full displacement
- Disp: 484000 (220000 kg)
- Inter Designer: Luiz deBasto design

- Exterior Designer: Luiz deBasto design
- Top: Flybridge with hard top
- Speed 9.5 / 10 knots

## Hull Characteristics

Hull Marine grade Steel/Superstructure marine grade Aluminum

Lube oil tankage	120 gal (.51 metric tons)
Contaminated oil tankage	120 gal (.51 metric tons)
Black water tank	427 gal (2.5 metric tons)
Grey water tank	427 gal (2.47 metric tons)
Range @ 9.5 knots	4000 nm

## Hull Subdivision

The vessel's hull shall be subdivided by transverse and longitudinal watertight and or oil tight bulkheads as shown on the contract drawings and consist of the following compartments:

1. Forepeak
2. Fresh Water Tanks
3. Crews quarters
4. Guest Stateroom #3 and crew lounge and laundry Compartment
5. Guest stateroom #1 and # 2 Compartment
6. Fuel Oil Tanks
7. Engine Room
8. Steering Gear Compartment, lazarette

## Hull Structure

KEEL	3/4" x 10" full length
STEM	3/4" x 10"
FLOORS	1/4" plate
SKEG (Depth 6")	sides 5/16", cross section 5/16", bottom 1/2"
BOTTOM PLATING	5/16" plate, up to the chines
SIDE, TRANSOM PLATING	1/4"
MAIN DECK PLATING	1/4" plate
BULKHEAD PLATING	1/4" plate and 3/16" where corrugated
TANK TOP PLATING	1/4"
TRANSVERSE FRAMES	Deck: 3"x 3" x 5/16"/Side: 3" x 3" x 5/16"
TRANSVERSE FRAMES	Floors: 1/4" "
ENGINE FOUNDATION	8" x 3/4"
LONGITUDINAL FLOORS	5/16"
DECK GIRDERS	3"x 3" 5/16" beams
BOTTOM LONGITUDINALS	5/16" plate

SIDE LONGITUDINALS	3"x 3" x 5/16" or plate
DECK LONGITUDINALS	5"x 3"x 5/16"
BULWARK FRAMES	4"x 1/4" plate
BULWARK LONGITUDINALS	3"x 1/4"
BULWARK CAP PLATE	2 1/2" stainless steel oval
BULKHEAD STIFF-VERT	Corrugated
BULKHEAD STIFF-HORIZ	Corrugated
ANCHOR SPRIT AND GUARDS	Stainless steel 316
CHAIN LOCKER	5/16"
RUB RAILS	(9" x 3" x 9") x1/4" 316 Stainless steel cap

## **Major Equipment List and Systems**

- Main Engines: 2 x Caterpillar model C18 Electronic, A rated 450 BHP@1800 RPM with deep sump oil pan 24V elect start
- Reduction gears: 2 x twin disk 3.50.1 with velvet drive
- Generators: (2) Kilopak or Northern lights 35 KW@1800 rpm 120/240 three phase 12 v electric start
- Shafting: 2 x 4" diameter Aqualoy 17 stainless steel
- Propellers: One pair, 1 R/H & 1 L/H Bronze, 5-blade propeller
- Rudders: 2 x wing shaped semi-balanced
- Vibration Dampers: all reciprocating machinery shall be mounted on resilient mounts
- Exhaust systems: Centek water wash system mains and generators
- Fire Extinguishing system: Kidde-Fenwal CO2 or Optec International water mist
- Engine controls: Kobelt with SPA 10590 remote
- Hydraulic steering system and pumps: Kobelt
- Bow Thuster: American Bow Thruster 65 HP
- Windless & ground tackle: 2 x 200 Kgs CQR type anchors with 2 x 137 meters 5/8 stud link chain, 2 x Maxwell VWC6000 windless, foot controls and remote control. Stainless chain guard on bow, Chain counters in wheel house
- Air conditioning system: One Aqua Air Series Model A12 -2-2 HC with soft starts with a total of 12 tons, Tempwise 2000 fan controls, 2 x raw water pumps
- Stabilizers: Quantum Marine Zero Speed
- Engine room Ventilation system: 2 x fans with variable speed and revering controls
- Tank Gauges: Self closing sight glass or dip sticks on all tanks plus a Tank Tender or similar electronic system
- Black water system: Head Hunter
- Steel head or Aritex marine crane 2 tons
- Passarelle: Aritex or similar fully retracting hydraulic passarelle
- Air horn: Buell quad pneumatic air horn with auto fog system.
- Sea Chests: Two sea chests with cross over pipe to feed all sea water systems
- Sea Water system: All piping shall be CuNi, all systems shall have individual sea strainers
- Bilge system: There shall be a AC power system and DC system, the AC system shall be backed up by the fire main system.
- Black & Grey water system: Head Hunter toilets system, 2 x diaphragm pumps for black

and grey interlinked. Holding tanks for black and gray

- Fuel oil system: 4 tanks including day tank holding approximately 9160 US gallons (34,800 liters) Alfa Laval MiB 303 fuel cleaning system, two x Racor fuel filters, Mod 75-1000MA for main engines, 2 x Racor fuel filters, Mod 1000 single for generators, Blackmer series molel 414-414A electric transfer pump, one manual pump.
- Lube Oil and Dirty oil system: 1 x 120 US gallon (456 liters) clean oil tank, 1 x 120 (456 liters) 2 x Oberdorfer AC pump hard plumbed into the system
- Portable water system: 2 x 800 gpd desalination units with auto back flush system, sand filter 2 x pressure sets Water Maker inc ¾ Hp AC with 36 gallon pressure tank, Hot water circulating pump, 2 x 50 US gallon (190 liter) hot water heaters, 2 x Aqua-Pure drinking water filter, 1 UV filter, 1 pressure reduction valve, 4 fresh water deck outlets, 2 x fresh water shower
- Compressed air system: 1 1/3 hp model 3 C-2425252D with 2.5 gal reserve tank, outlet in engine room and foredeck
- Shore power feed/ power conversion system: Atlas 45 KVA power converter, 2 x 100 amp Glendening cable system, 2 x 150' of 100 amp cord
- Main Switchboard: Atlas panel with seamless transfer, Trace inverter with link 4000
- Ships Lighting: As much as practical all lighting shall be LED
- Low Voltage system: Main engine starts 24 volt, 2 banks 8D batteries with paralleling system, Generators 12 volt, 2 banks 8D with paralleling system, Electronics: 4 12 volt 8D batteries for two banks of 24 volts, House bank 2 8D batteries for 24 volts, Chargers 1 60 amp, 2 x 40 amp
- Navigation lights: Aqua Signal 55 series LED
- Corrosion Monitor: Engelhard Monitor
- Under water lighting: 5 LED lights
- WINDSHIELD WIPERS Five (5) electric wipers, one for each of five (5) center windows, Exalto / Vetus 295M pantograph with integral washers, or equal, with stainless steel arms.
- COMPASS Two (2) Danforth 5" Constellation or similar.
- PILOTHOUSE SEATING One (1) bench settee seat per designer drawings with granite top table, One (1) centerline helm seat as per drawings

## **Allowances for All Ocean Yachts Explorer**

Carpet and pad:

\$44 per yard

Granite flooring and counter tops

\$110 per square meter

Interior settee fabric and/or Brazilian leather

\$40 per square yard

Window treatments

---

All Ocean Yachts

BAHIA MAR Resort & Marina 801 Seabreeze Boulevard Fort Lauderdale, Florida 33316

United States

Phone: +1.954.671.0107, Email: johnd@alloceanyachts.com

URL: <http://www.buyexploreryachts.com>

***All Ocean Yachts 90' Steel***

7/29/2010

Page 12

\$12,000

Wall panels and overhead materials and/or Marjilite  
\$40 per square yards

Electronics Allowance  
\$180,000 (list of equipment to be provided)

Entertainment allowance  
\$25,000 (list of equipment to be provided) (purchased in Brazil)

Yard install of electronics and  
\$6000

Light fixture costs:

Interior light fixture costs lower accommodations:  
\$30

Interior light fixture cost Main Deck except Galley:  
\$40

Interior light fixture cost Galley:  
\$30

Interior light fixture cost Upper Deck:  
\$30

Interior light fixture cost Crew Areas:  
\$30

Exterior light fixture cost:  
\$42

Tender built in Brazil (crew tender):  
\$25,000

Tender built in Brazil (owner tender):  
\$55,000

All "white goods" on vessel:  
\$35,000 (including washer, dryers, Galley Equipment, exterior equipment)

Hardware:  
All plumbing, bath fixtures

\$36,000

All interior hardware:

\$15,000

Owner supplied items (to be purchased in country of builder)

Loose furniture

Chinaware

Galley loose equipment

Art work

Bed covers and linens

## **Appliances**

Note: The items and prices below are given as an indication of the equipment that can be purchased with the allowance. Allowance for all "white goods" as given in the "Allowance sheet is USD\$35,000. Prices shown below are in US dollars. Additional equipment not listed below would incur installation costs

One (1) GE Dishwasher Model GSD2350R CS Stainless steel \$300

One (1) ENODIS Dishwasher 3 minute model Avenger HT \$3550

One (1) Double Convection self-cleaning oven GE model PT960SPSS \$3600

One (1) 36" Induction cook top Miele Model KM5773 \$3000

One (1) 36" Stainless vent Zephyr Power Series AK7536ASX with 1100 CFM Dual Internal with 2 Blowers ( PBI1100A) Heat lamp kit, heat lamp bulbs, Telescopic back splash with warming shelves (AK0716 \$2130

Two (2) Garbage Disposal insinkerator 1 hp model EXCEL 2 x \$320

Two (2) True fridge model T23 2 x \$2000

One (1) Frigidaire 8.8 Cubic ft chest freezer FFN09M5HW US\$339 on aft pilothouse deck

One (1) Frigidaire 8.8 Cubic ft chest freezer FFN09M5HW US\$339 on aft pilothouse deck to be a "TRASH FREEZER"

One (1) GE Stacked Washer/Dryer # WSM2700HWW located in Master stateroom. \$1200

Two (2) LG Dryers located in Laundry, vent-less Model DLE2050W 2 x \$750

Two (2) LG Washers located in Laundry Model WM2050CW 2 x \$700

One (1) GE Profile Trash compactor Stainless steel GCG1500RSS \$640

One (1) Avanti counter high refrigerator 4.5 CU. BCA4562SS2 US\$250

Three (3) GE GVS04BDWSS Stainless Steel Beverage Center / 4.10 Cu. aft deck, skylounge and flybridge 3 x US\$320

Two (2) GE PCR06WATSS under counter wine coolers, one in skylounge, one in dinning area 2 x \$1100

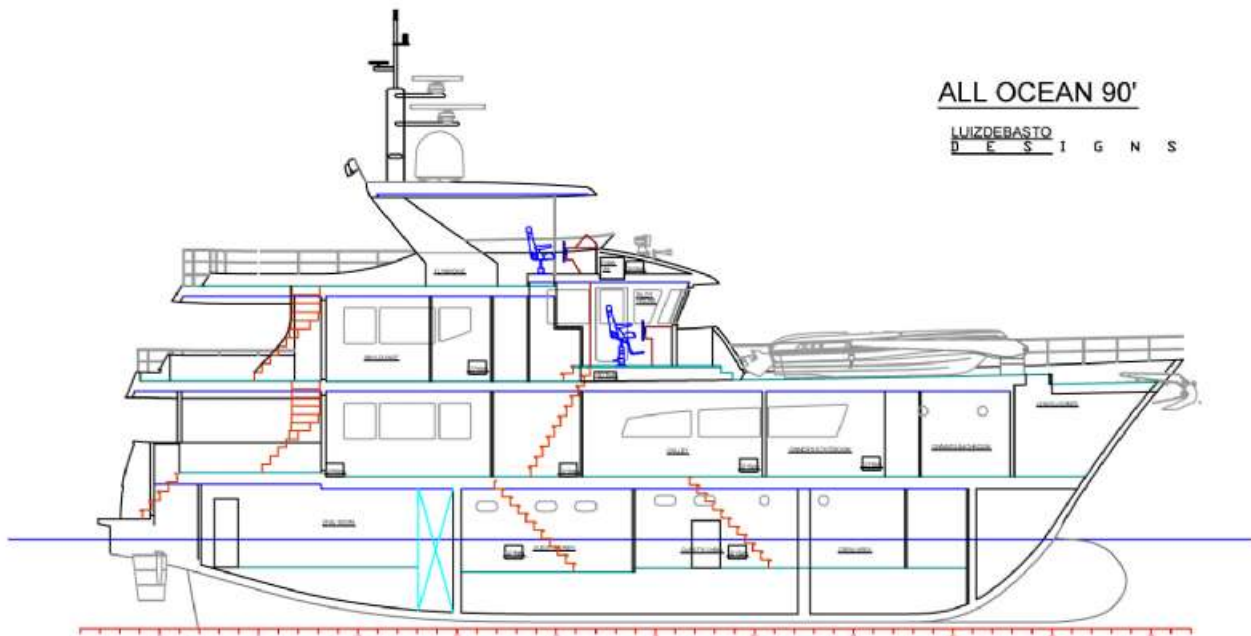
Two (2) Hoshizaki Ice maker 50 ppd Model AM50BAEAD Ice maker in skylounge and flybridge 2 x \$1500

One (1) Miele CVA2000 Series Built In Nespresso Coffee Systems (models CVA2650/2660) \$2400

## Other



## Cutway View



All Ocean Yachts

BAHIA MAR Resort & Marina 801 Seabreeze Boulevard Fort Lauderdale, Florida 33316  
United States

Phone: +1.954.671.0107, Email: johnd@alloceanyachts.com

URL: <http://www.buyexploreryachts.com>

**All Ocean Yachts 90' Steel**

7/29/2010

Page 16

## Profile



All Ocean Yachts

BAHIA MAR Resort & Marina 801 Seabreeze Boulevard Fort Lauderdale, Florida 33316  
United States

Phone: +1.954.671.0107, Email: johnd@alloceanyachts.com

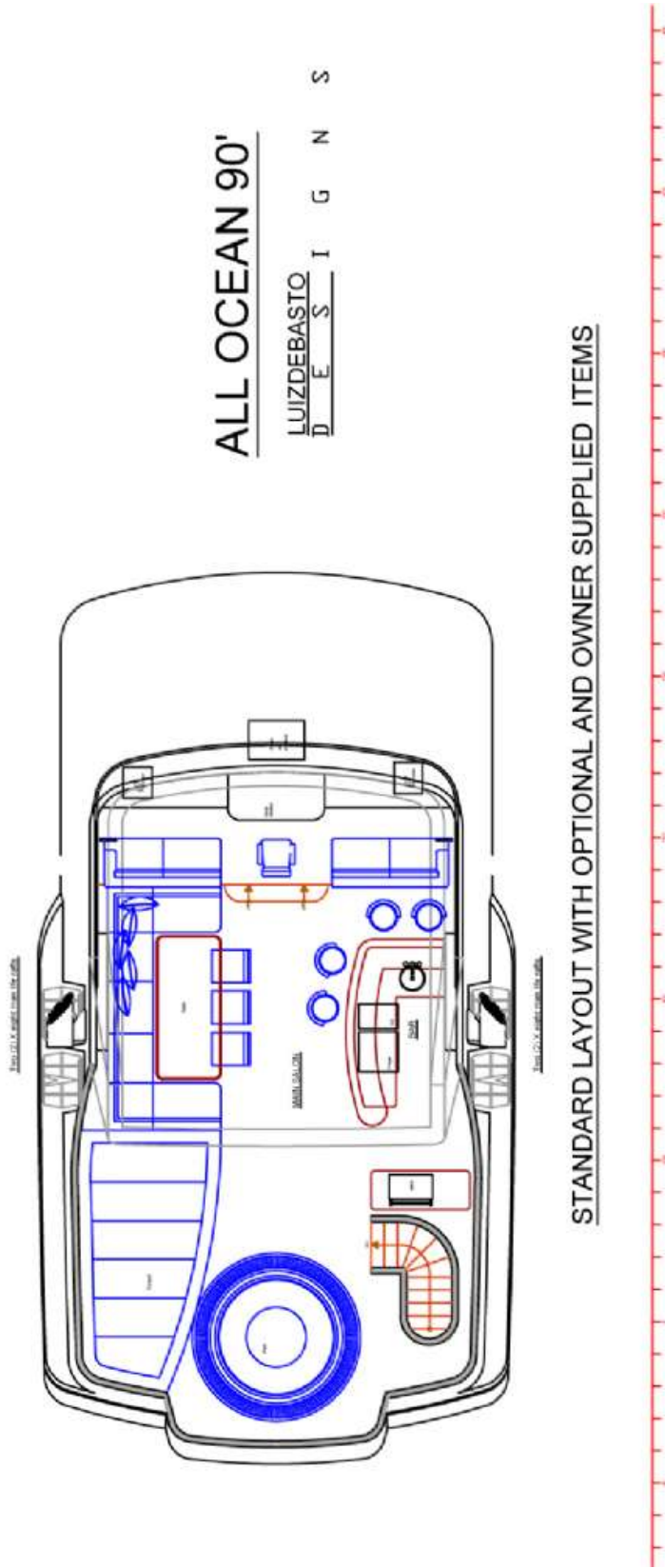
URL: <http://www.buyexploreryachts.com>

***All Ocean Yachts 90' Steel***

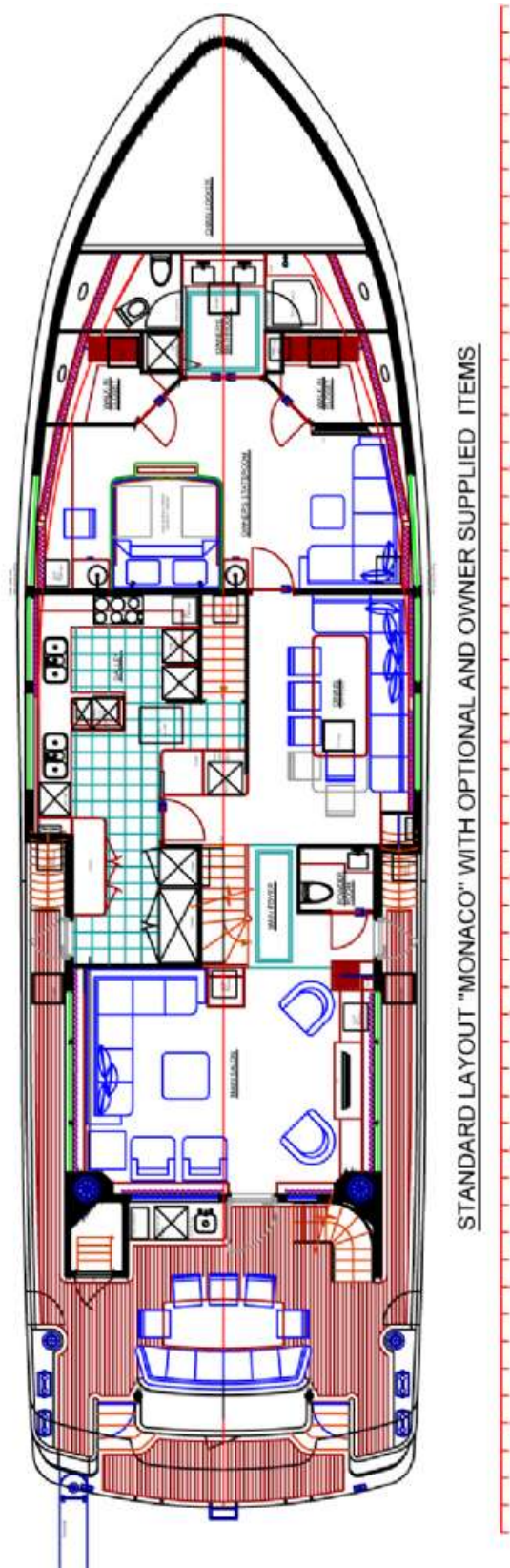
7/29/2010

Page 17

# Layout

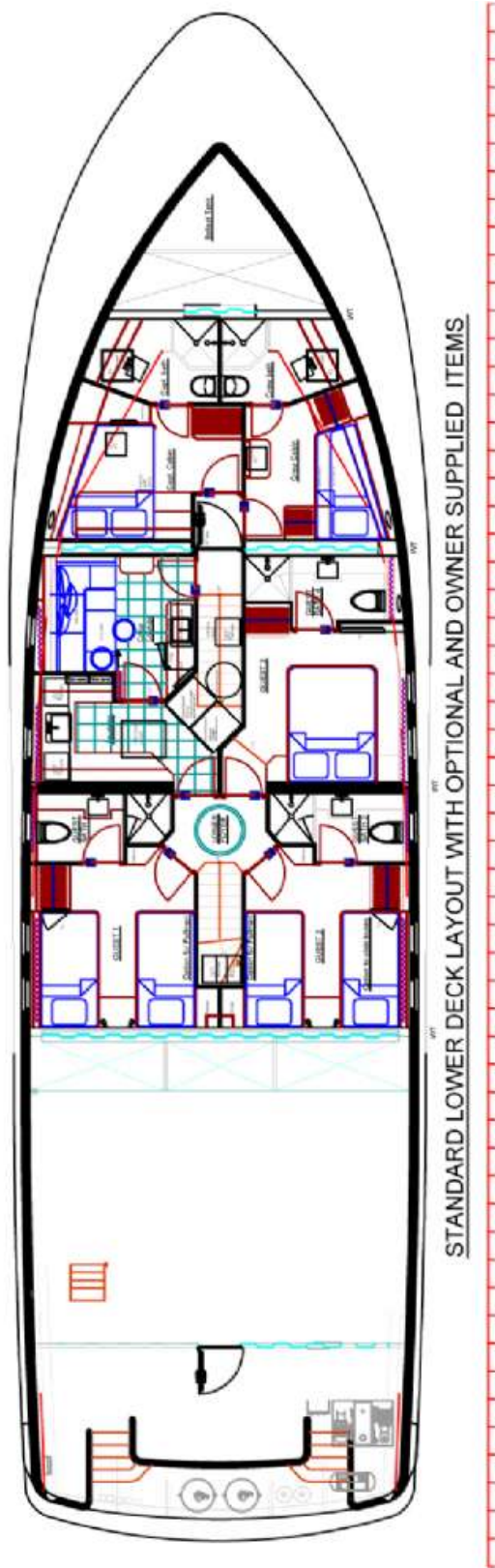


# Layout



STANDARD LAYOUT "MONACO" WITH OPTIONAL AND OWNER SUPPLIED ITEMS

# Layout



All Ocean Yachts

BAHIA MAR Resort & Marina 801 Seabreeze Boulevard Fort Lauderdale, Florida 33316  
United States

Phone: +1.954.671.0107, Email: johnd@alloceanyachts.com

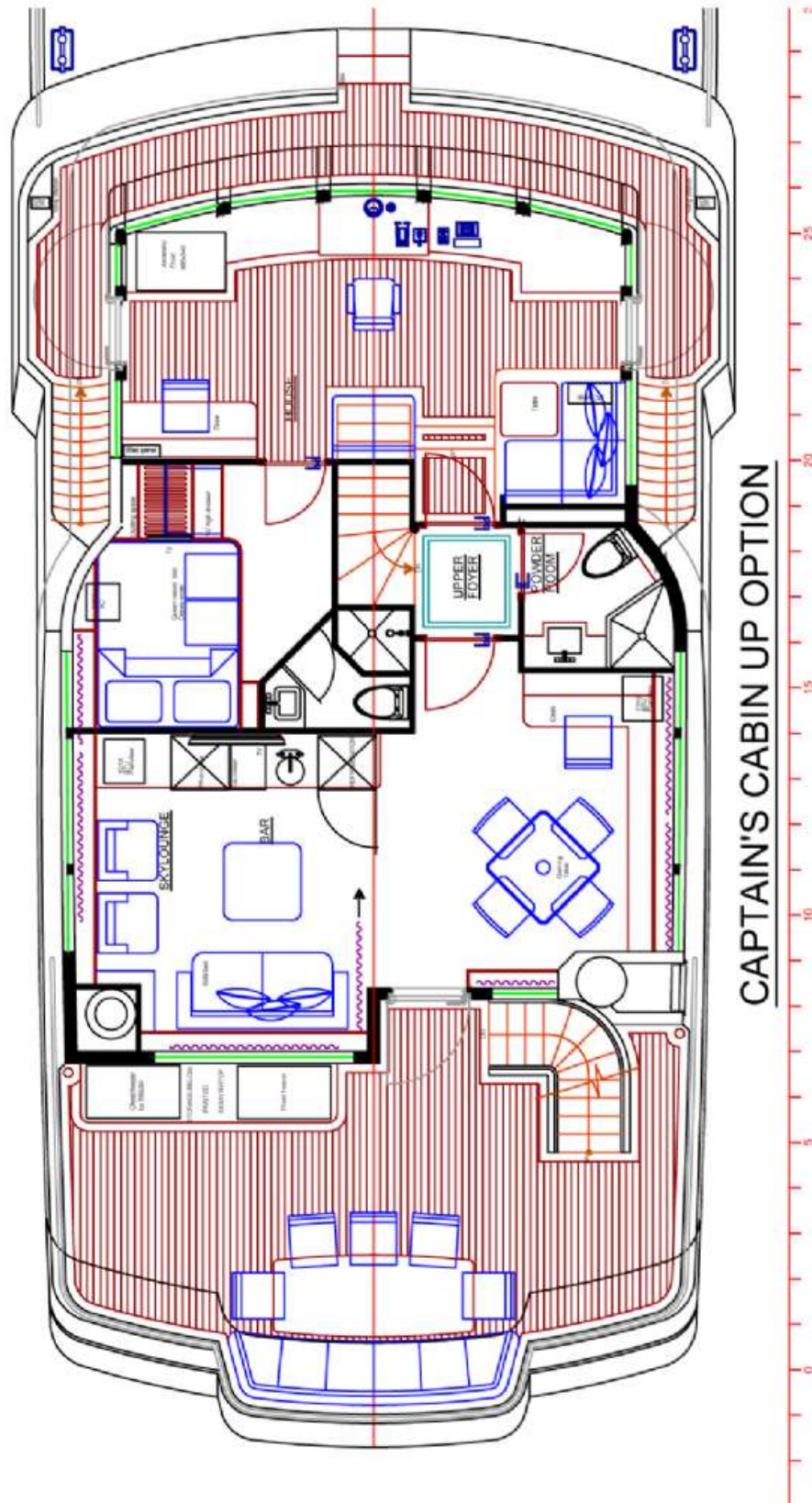
URL: <http://www.buyexploreryachts.com>

**All Ocean Yachts 90' Steel**

7/29/2010

Page 20

# Layout



All Ocean Yachts

BAHIA MAR Resort & Marina 801 Seabreeze Boulevard Fort Lauderdale, Florida 33316  
United States

Phone: +1.954.671.0107, Email: johnd@alloceanyachts.com

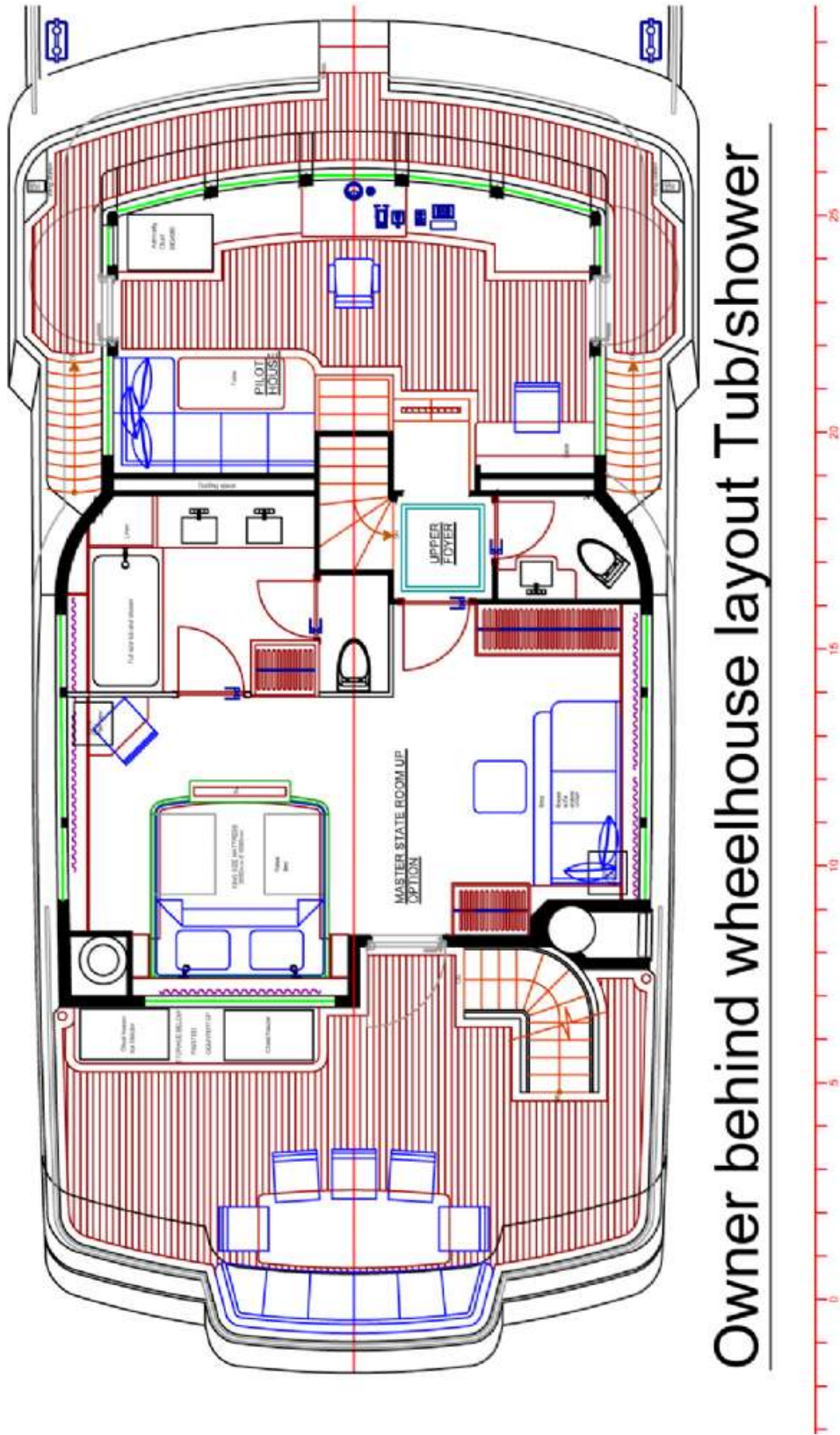
URL: <http://www.buyexploreryachts.com>

*All Ocean Yachts 90' Steel*

7/29/2010

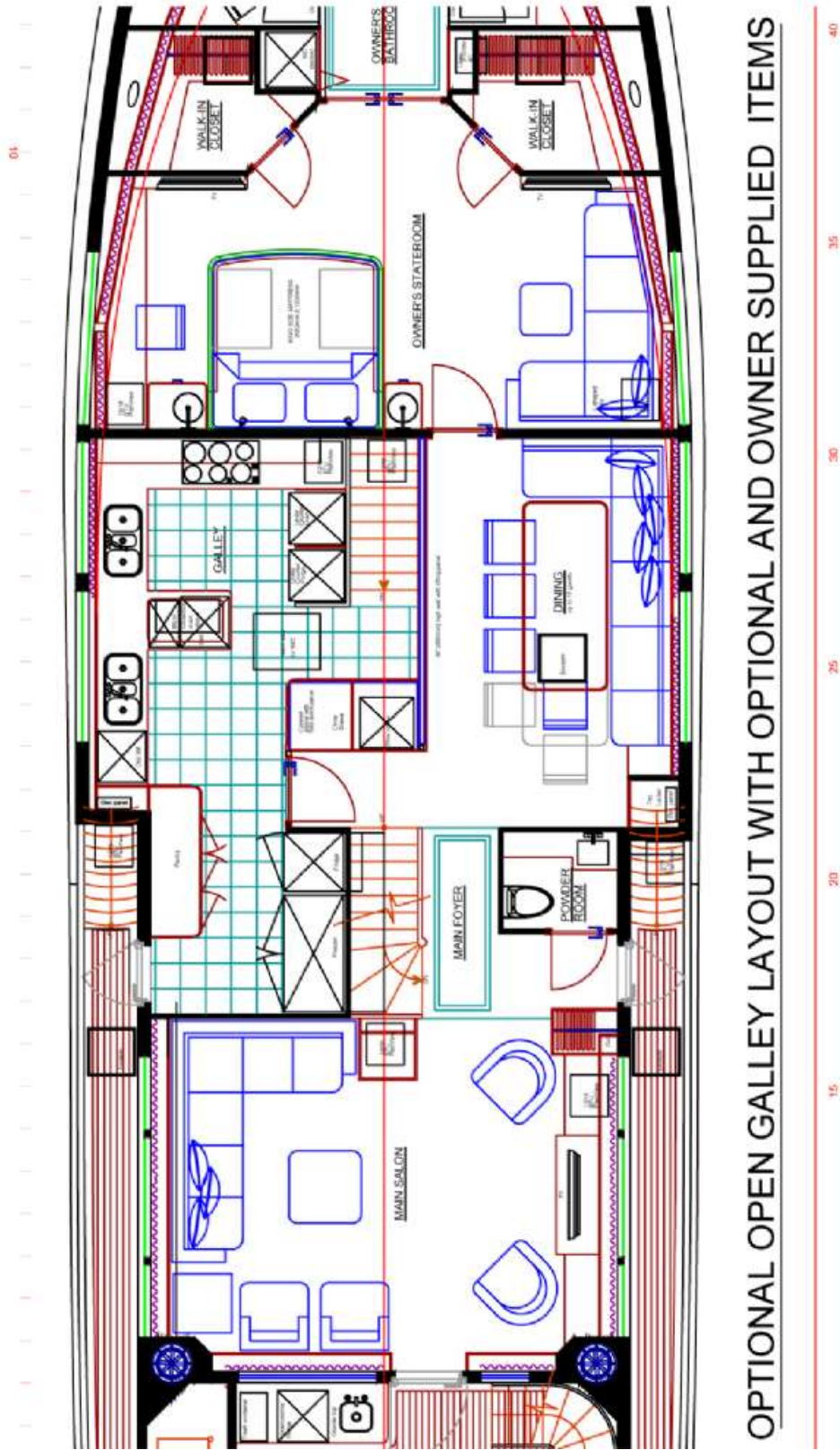
Page 21

# Layout



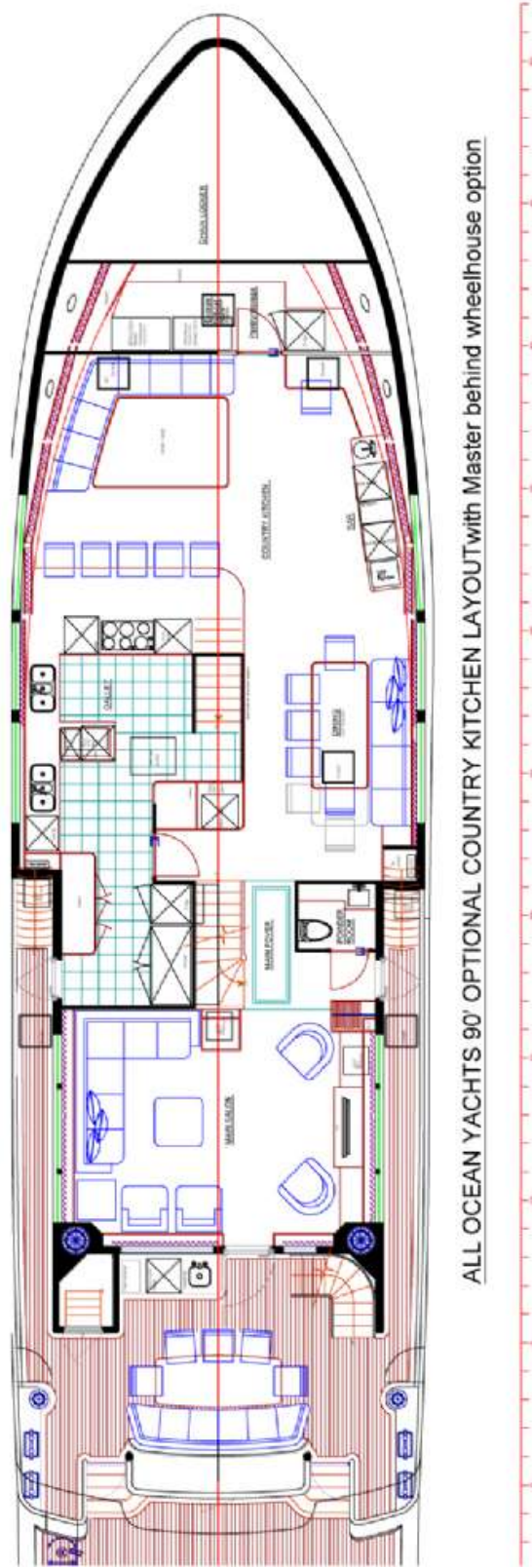
Owner behind wheelhouse layout Tub/shower

# Layout



OPTIONAL OPEN GALLEY LAYOUT WITH OPTIONAL AND OWNER SUPPLIED ITEMS

# Layout



ALL OCEAN YACHTS 90' OPTIONAL COUNTRY KITCHEN LAYOUT with Master behind wheelhouse option

All Ocean Yachts

BAHIA MAR Resort & Marina 801 Seabreeze Boulevard Fort Lauderdale, Florida 33316  
United States

Phone: +1.954.671.0107, Email: johnd@alloceanyachts.com

URL: <http://www.buyexploreryachts.com>

*All Ocean Yachts 90' Steel*

7/29/2010

Page 24

# Layout



Owner Up / Forward TV lounge and office/Aft bar / Gaming room