



FRASER YACHTS
WORLDWIDE



MV ITASCA

Itasca General Information

July '05

Length:	53.6 meters / 175.8 ft
Beam:	10.6 meters / 34.7 ft
Draft:	5.2 meters / 17.1 ft
GRT:	845 T
NRT:	253 T
Flag:	Cayman Islands
Port of Registry:	George Town, Cayman Islands
Owning Company:	Blue Reflections Ltd
Official Number	384738
IMO Number	1002055
Type of Registration:	Pleasure Vessel
VHF call sign:	ZGHI
Year and Builder:	1961 - J.K. Smit, Holland
Type:	Single Screw Motor Yacht
Number of Engines:	2
Power:	1838 kw
Cruising Speed	11.2 kts
Avg. fuel consumption	5,500 liters per 24 hours of steaming
Maximum Range:	13,000nm
Fuel Capacity	272,000 liters
Water Capacity	44,000 liters
Hull Material:	Steel
Hull Color:	Blue
Accommodation Color:	White
Number of Crew:	12 (total)

Use: **Private Yacht**

Classification: Lloyd's Register: +100 A1 LMC

All surveys and certificates are current. The Lloyd's Register 5 Year Special Survey due January 2006 is 80% complete (including all out of water and hull surveys).

Certificates Held

Certificate of British Registry	Cayman Islands
Certificate of Class	Lloyd's Register
MCA Code of Practice Compliance Letter	Cayman Islands
International Tonnage Certificate	Cayman Islands
International Load Line Certificate	Lloyd's Register
Cargo Ship Safety Equipment Certificate	Cayman Islands
Cargo Ship Safety Construction Certificate	Lloyd's Register
Cargo Ship Safety Radio Certificate	Cayman Islands
Cargo Ship Safety Radio Exemption Certificate	Cayman Islands
Public / Private Ship Station Radio License	Cayman Islands
GMDSS Shore Based Maintenance Agreement	Mackay Marine
Accounting Authority Letter	Peninsular Electronics
Safe Manning Certificate (Yacht)	Cayman Islands
I.O.P.P. Certificate and Supplement	Cayman Islands
Waste Water Treatment Plant Certificate	Hamann Wassertechnik
Deratting Exemption Certificate	Ministry of Health, New Zealand
Statement of Non-Applicability (SOLAS XI-2 & ISPS)	Cayman Islands
Tin Free Anti-Fouling Certificate	Lloyd's Register
Panama Canal Tonnage Certificate	Panama Canal Commission
Suez Canal Special Tonnage Certificate	Lloyd's Register
Ship's Carving and Marking Note	Cayman Islands
Compass Declaration	Capitan Copeland, Australia
Load Test Certificates for Port & Starboard Deck Cranes	Lloyd's Register

Certificates previously held but dormant due to current cruising itinerary

Certificate of Financial Responsibility	DOT / USCG
California Certificate of Financial responsibility	CA Dept. of Fish & Game
Oil Spill Contingency Plan Approval Letter	CA Dept. of Fish & Game
Non Tank Vessel Initial Response Activity Manual	ECM Maritime
Water Quality Insurance Declaration	WQI Syndicate

General History

Year built: 1961 by J.K. Smit in Holland (1 of 4 sister ships)

Original name: THAMES

Built as an ocean going salvage tug which operated world wide until 1979

Purchased and converted to a yacht in 1979

Changed Ownership again in 1993

Current Owner: December 2000 to present

Past Itineraries

1982-1993: Mainly the west coast of Central & North America

1994: Arctic transit NW Passage / NY / Panama / Chile / Antarctic

1995: Chile / New Zealand / Fiji

1996: New Zealand / Hawaii / Seattle / West Coast USA / Caribbean

1997: Caribbean / East Coast USA

1998: South America / Chile / Antarctica / Baltic / Mediterranean / Red Sea / Maldives / Australia / New Zealand

1999: New Zealand / Vanuatu / Fiji / Tahiti / New Zealand / America's Cup

2000: New Zealand / Fiji / San Diego, CA

2001: San Diego, CA / Genova, Italy / Mediterranean / Madeira, Portugal / Canary Islands, Spain / Puerto Rico, USA

2002: Puerto Rico, USA / British Virgin Islands / Cuba / Mexico / Florida, USA / Mexico / Belize / Florida, USA / San Blas Islands, Panama / Columbia / Jamaica / Turks & Caicos / Bahamas / New York City, Long Island Sound & Florida, USA

2003: Florida, USA / Mar Del Plata, Argentina / Puerto Natales, Patagonia, Juan Fernandez Islands & Cape Horn, Chile / South Shetland Islands / Antarctica / Ushuaia, Argentina / Las Perlas Islands, Panama / Cocos Island & the west coast of Costa Rica / California, USA / Sea of Cortez, Mexico / Hawaii, USA / Pohnpei, Truk, Yap & the Federated States of Micronesia / Palau / Singapore / Thailand / Burma / Philippines

2004: Philippines / Papua New Guinea / Cairns, Australia / Tonga / Lau Group, Fiji / New Zealand

2005 (thru March): New Zealand / Cocos-Keeling, Australia / Maldives / Eritrea

Accommodations, Furnishings and Layout

Flybridge: Observation deck & sun bathing

Bridge deck: Wheelhouse, Chart room, Captain's cabin & Helicopter deck

Sun deck: Owner's stateroom & suite, Sun lounge, Sauna, Bar, Bathroom & Outside seating

Main deck: 4 x Guest staterooms with ensuites (3 x doubles, 1 x twin), Main galley, Pantry, Main saloon and Dining area, Bathroom & Gymnasium

Lower deck: 6 x crew cabins with ensuites, Dining & Lounge area

Engine room: As per E/R list

Fwd lower deck: Laundry, walk in Refrigerator & Freezer

Office Equipment

Computers

1 x Server – Compaq P111 550mhz

1 x Office desktop – Compaq Celeron 466 mhz with 16" Sony LCD monitor – new 11/2002

1 x Navigation desktop – Pentium 4, 3.0 ghz with 18" Sony LCD monitor – new 7/2004

1 x Engineer's desktop – Dell Optiplex GX150 Pentium 3, 1.2 ghz – new 5/2002

1 x Captain's laptop – Dell Inspiron 8100, Pentium 3, 720 mhz – new 6/2002

3 x Laptops – Panasonic CF47 P11 366 mhz

All computers operate on a network and are connected to email via Inmarsat, land line & GSM

All computers fitted with UPS & surge protection

Printers

1 x Xerox Phaser 5400 large format laser printer

1 x Hewlett Packard 952 C Deskjet

1 x Hewlett Packard 960 Cxi Deskjet

1 x Hewlett Packard 722 C Deskjet

2 x Epson Stylus Photo 820

1 x Panasonic KX-P1080

Photocopier

1 x Xerox XC830

Scanner

1 x Hewlett Packard Scanjet 4570c

Fax Machines

2 x Hewlett Packard 920

1 x Panasonic KX-FP155

Telephone Systems

1 x Panasonic KX-T1232 PABX – 12 CO lines & 32 internal lines. New 2005

3 x EnGenius SN-920 cordless telephones/radios, 900 MHz – interfaced with PABX

2 x Motorola Telular GSM cellular units (voice, fax & data) connected to PABX. New 1998

3 x Nokia GSM handheld phones

Entertainment Equipment

1 x SeaTel 4894 stabilized deck mounted antenna with LNBS for various different satellite providers

1 x SeaTel Tac 92 antenna controller

Owner's Stateroom

44" Sony Plasma multi-system TV with In-Focus scaler on electric lift, Yamaha RX-V1000 receiver/amplifier, Pioneer DV-343 region free DVD player, Sony CDP-CX53 50 disk CD player, Aiwa MX100 multi-system VCR, Speakercraft 6.6MT speakers, custom audio/video distribution switch, Surge X 1115-RT surge protector, various worldwide satellite TV decoders.

Owner's Suite

Sharp LC-28hmx 28" LCD AV multi-system monitor, Yamaha RX-V1000 receiver/amplifier, Pioneer DV-343 region free DVD player, Sony CDP-CX53 50 disk CD player, B&W LM1 speakers, Surge X 1115-RT surge protector.

Sun Lounge

Yamaha RX-V1000 receiver/amplifier, B & K ST260 power amplifier, Sony CDP-CX53 50 disk CD player, Speakercraft 8.1MT & Boston Acoustics speakers, Surge X 1115-RT surge protector, custom volume & distribution controls.

Main Saloon

Sony 27" Trinitron multi-system TV, Yamaha RX-V1000 receiver/amplifier, B & K ST260 power amplifier, Pioneer DV-343 region free DVD player, Sony CDP-CX53 50 disk CD player, AIWA MX100 multi-system VCR, Speakercraft 8.1MT speakers, Surge X 1115-RT surge protector, custom audio/video & distribution controls, various worldwide satellite TV decoders.

Gymnasium

Sharp XV-Z7000E AV projector, 88" retractable screen, Speakercraft 6.1 CRS & Sunfire speakers.

Guest Cabins 1, 2, 3 & 4 (each)

Sony KV-PF21M40 21" multi-system TV, Yamaha RX-V420 receiver/amplifier, Pioneer DV-343 region free DVD player, Speakercraft 6.1CRS speakers, connected to satellite TV decoders.

Capitan's Cabin

Sony KV-PF21M40 21" multi-system TV, Sony MCH-C20 component stereo, Pioneer DV-343 region free DVD player, Aiwa HV-MX1 multi-system VCR, Sony speakers, various worldwide satellite TV decoders.

Crew Area

Sony 27" Trinitron multi-system TV, Pioneer DV-343 region free DVD player, Samsung SV-5000 SQPB multi-system VCR, Sony DHC MD333 stereo (CD, mini-disk, radio & tape), Sony speakers, various worldwide satellite TV decoders.

Portable:

3 x Philips AZ2536 CD & MP3 players

Electronics / Bridge

Radars

1 x Furuno FR-2125, 96/120nm range. X-band with ARPA
1 x Furuno FR-2030S, 96/120nm range. S-band with ARPA
1 x Furuno FMD-8000 slave display

Depth

1 x Furuno CH-32 retractable colours sonar
1 x Furuno FCV-582L colours sounder
1 x Furuno FE-881 MK-II recording echo sounder

Charts & Publications

1 x ECDIS: Transas Nav-Sailor 3000, world chart folio – current March 2005
1900+ x paper charts
55+ x sailing directions
All required publications are current

GPS

2 x Trimble NT300D
1 x Garmin 45XL, handheld
1 x Magellan 2000XL, handheld

Log

1 x Furuno Doppler DS-70

Autopilots, Gyro & Magnetic Compasses

2 x Anschutz Nautopilot D
1 x Anschutz Nautocourse
1 x Anschutz gyro repeater
1 x Anschutz Standard 14. Serviced annually and sphere replaced in June 2004
1 x Cassens & Plath magnetic compass
1 x Saura Keiki Seisakusho T-150IIF magnetic compass

1 x Ritchie MagOne fluxgate compass at emergency steering station

AD converters

2 x Furuno AD-100

Weather

1 x WNI Ocean Routes. Orion Pro software version 4.5.0

1 x Furuno Navtex receiver NX-500

1 x Furuno D-fax 214

1 x Wempe barograph (365 day record)

1 x Chelsea barometer

Wind Instruments

1 x Belfort model 135 aerovane indicator

1 x Belfort model 120 aerovane transmitter

Ockam Instrument System

1 x CPU

4 x 044 Magnum displays

1 x Custom gyro interface

1 x Custom Belfort interface

1 x GPS interface

1 x APRA boatspeed interface

1 x Depth interface

1 x NMEA interface

Inmarsat Communication Systems

Satcom-B

1 x Furuno Felcom-81A, Class 1 with high speed modem. GMDSS compliant

Fleet-77

1 x Nera F77

Satcom-C

1 x Furuno Felcom-12. GMDSS compliant

Iridium

1 x Motorola 9505 handheld telephone with external antennas

VHF

1 x Furuno FM-7000 with private channels

1 x Furuno FM-2610

1 x Furuno FM-8500 with DSC & private channels. GMDSS compliant

2 x Furuno RB-700 remote VHF stations in crew area & main galley

8 x Icom IC-M1V handheld VHF's with private channels

4 x Icom IC-M1 handheld VHF's with private channels

3 x Icom IC GM1500 Waterproof. GMDSS compliant

SSB

1 x Furuno FS-5000 with Furuno 5A DSC terminal. GMDSS compliant
1 x Furuno FS-1502
2 x Furuno RB-500 remote SSB stations in crew area & main galley

Automatic Identification System

1 x McMurdo MT-1. Interfaced with ECDIS system

EPIRB and SART

2 x Alden Satfind 406 EPIRBs in float free brackets on bridge deck
1 x Kanad 406/121.5mhz portable EPIRB
2 x Serpe-Isem SARTs on bridge deck

Security System

1 x Pelco SD5 series PTZ mast mounted camera
1 x Pelco DD5 series PTZ mast mounted camera
2 x Panasonic WV-CP450 well deck cameras
1 x Panasonic WV-CM 1020 CRT monitor (Bridge)
1 x Marshall V-LCD10.4LCD-P monitor (Capitan's cabin)
1 x Panasonic WV-CM1000 CRT monitor (Crew area)
3 x Pelco KDB300 keyboards
1 x Pelco CM6700 series switcher/controller

Searchlights

2 x Seematz 450 watt, manual control
1 x Seematz 1000 watt, remote control

Main Galley Equipment

Electrical supply, 110 vac / 208 vac 60 hz
2 x Hobart dishwashers model LX30h, complete overhauls in 2000 & 2005
1 x Lang six burner stove with hot plate
3 x Lang convection oven model EHS-S
1 x Lang salamander / grill model 36S-SH
1 x Custom extraction system
1 x GE trash compactor
1 x Wells deep fryer
1 x GE microwave model JE 1360GB, 1500 watts
1 x Esquire food/plate warmer
1 x Sub Zero Polar Quest freezer 22 CuFt. New compressor & motor 2004
1 x Cool-Tec walk-in refrigerator. 3 front doors plus back opening storage door, 170 CuFt
1 x Garbage disposal

Pantry

Electrical supply, 110 vac / 208 vac 60 Hz
1 x Whirlpool refrigerator/freezer. 9 Cu Ft refrigerator, 3 Cu Ft freezer
1 x La Cimbali M31 Bistro coffee machine

Crew Galley

Electrical supply, 110 vac / 208 vac 60 Hz

1 x Hobart dishwasher model LX30h. Complete overhauls in 2000 & 2005
1 x GE trash compactor
1 x Scotsman icemaker model CSW1. 51 Lbs in 24 hrs
1 x GE microwave model JE-1360GB, 1500 watts
1 x Maytag refrigerator/freezer. 11 Cu Ft refrigerator, 4 Cu Ft freezer
1 x Sub-Zero drink refrigerator. 4 Cu Ft

Deep Storage Refrigeration and Freezer. Located on the forward lower deck

Refrigeration: 200 Cu Ft single door opening. Installed 1994.

Freezer: 500 Cu Ft Single door opening. Installed 1994.

1996

New seawater pumps and plc controller fitted to both systems.

1997

New semi-hermetic compressors fitted.

2001

New compressors fitted.

2002

New condensers, sea water pumps & plumbing fitted. No.1 compressor changed to a Bitzer 4Ec4.2Y.

2005

Condensers cleaned, new control board fabricated and No.2 compressor changed to a Bitzer 4Ec4.2Y.

Freezer evaporators remounted, air flow reversed & drains modified.

Additional Refrigeration

Owner's Suite Frigomar refrigerator/freezer. 3 CuFt

Capitan's Cabin Whirlpool refrigerator/freezer. 2.6 CuFt

Sun Lounge Sub-Zero refrigerator. 3 cuFt. Scotsman ice maker

Aft deck Frigomar C751 refrigerator. 2.6 CuFt.

Flybridge Frigomar C421, refrigerator. 1.5 CuFt.

Laundry

3 x Miele clothes washers model WS5425

2 x Miele clothes dryers model T5206

1 x Miele roller iron model HM 21-100

Electrical System

440 volt / 3 phase / 60 Hz

2 x 72 Kw transformers supply 208 volt / 110 volt

4 x Rectifiers supply 220 volt DC

Engine Room Equipment

Main Engines

2 x MAN Rab1459. 9 cylinder, 1250 HP Diesels 1961.

1994

Turbochargers overhauled & new rotors installed. Selected cylinder heads overhauled. Forward gear trains replaced aft gear trains inspected. Governor drive replaced & governors serviced. Engine driven lube oil pumps overhauled. Crankshaft deflections taken.

1995

Both fuel racks overhauled with new bushes. Both cylinder lube oil pumps overhauled and tested.

Crankshaft vibration damper spring packs renewed. 1 piston removed from each engine for Lloyds. Remaining cylinder heads overhauled. Starboard pneumatic clutch rings renewed. Crankshaft deflections taken.

1996

All fuel injection pumps rebuilt with new elements. Engines retimed.

1997

All cylinder heads reconditioned, rocker bearings replaced, big end bearings inspected. 5 pistons overhauled on starboard engine.

1999

Rebuild starboard main engine. New bottom end bearings, liners pulled and seals replaced, pistons re-ringed as required, cylinder heads completely overhauled, start valves overhauled. New lagging on exhaust.

2000

Rebuild port main engine. New bottom end bearings, liners pulled and seals replaced, pistons re-ringed as required, cylinder heads completely overhauled, start valves overhauled. New lagging on exhaust.

2001

Remove 2 cylinder heads on each engine for inspection. Fabricate & install exhaust rice washing system. Overhaul both turbochargers.

2002

Remove, disassemble, inspect & repair as necessary; air start valves, cylinder head relief valves, injectors, crankcase relief valves.

2003

Overhaul both turbochargers. Clean and service injectors.

2004/2005

Port ME (Philippines): Recondition all 9 cylinder heads plus 3 spares. Removed, cleaned and inspected all cylinder liners and pistons. Intercooler removed & cleaned. Air trunking removed & cleaned. Air start system rebuilt. Removed & rebuilt governor and governor drive. Inspected forward gear train & vibration dampener. Engine driven lube oil pumps overhauled. Peak pressures & crankshaft deflections taken & recorded. (full report available)

Starboard ME (New Zealand): Recondition all 9 cylinder heads. Removed, cleaned and inspected all cylinder liners and pistons. Crankshaft pins and bearings, inspected, measured & recorded. Intercooler removed & cleaned. Air trunking removed & cleaned. Rebuilt air start system. Removed & rebuilt governor and governor drive. Peak pressures & crankshaft deflections taken & recorded. (full report available)

Both ME: All fuel pumps disassembled, inspected, refurbished, reinstalled and timing checked. Valve & fuel camshaft rollers and pins replaced.

Gearbox

Lohmann and Stolterfoht. Reduction ratio = 2.22: 1 with maximum shaft speed of 180 rpm 1961.

1996

New clutch port side

1995, 2000, 2002 & 2004

Opened and inspected for Lloyds.

Propeller, shaft, pedestal bearing and stern tube 1961.

1995

Propeller and shaft removed for Lloyds. Shaft magnetic flux crack tested. New Simplex shaft seal.

December 2000

Shaft removed & inspected for Lloyd's. New seals installed.

November 2004

Shaft removed, inspected & magnetic particle tested for Lloyd's. Pedestal bearing inspected and skim cut. Propeller pitch and index measurements checked and corrected. Propeller static and dynamically balanced. New shaft seals installed. (full report available)

Shaft Alley

Fresh water system

2 x Grundfoss CRN4-40 pumps with Baldor electric motors – rebuilt 2005

2 x composite pressure tanks – new 2005

Plumbing cleaned up, repaired or replaced as necessary - 2005

1 x Aquafine SL-L ultra violet sterilizer

1 x Chemfree ozone generator injecting ozone directly into the water tanks

Water maker sea water pre-heater (Allows operation of both water makers in extremely cold sea water)

Alpha Laval plate type. New 1994

Deck wash pump

Teel 2PC30 booster pump, new 1998. New pressure tank in 1995 & 2002

Oily water separator

Heli-sep 500 J 1838 (USCG approval no. 162050/1138/0)

New 1986 Overhauled 1995, 1999 & 2004

1995

15ppm oil content monitor fitted

Engine Room, Port Side

Main air compressors

3 x Atlas-Copco LT 1230 11

All rebuilt by Atlas-Copco November 2004

Stabilizer, port aft (please also see "E/R Center"&"Converter Room") Vosper 1981.

1994

Servo valve overhauled.

1995

New stock bearings and stock overhauled.

1996

New ram seals.

1998

Servo valve overhauled.

2000

New rose bearings and pins.

2002

Rod end bearings and pins replaced.

2004 - November

Fin, shaft & pistons removed, inspected, repaired as necessary and reinstalled. Rod end bearings & pins replaced as necessary.

No.2 Gearbox coupling & Lube oil pump – DC motor driven pump set 1961.

Motor – Smit Slikkerveer MG 30/16 (220 Vdc, 15 Kw)

Gearbox lube oil pump – Houttuin 76109512048

Coupling lube oil pump – Houttuin 4111252

1994

Gearbox lube oil pump overhauled. Coupling lube oil pump overhauled.

1995

DC motor overhauled.

2002

Gearbox lube oil pump overhauled. Coupling lube oil pump overhauled.

2005

DC motor overhauled at shore side facility.

Port Main Diesel Alternator

1995

Caterpillar 3406b engine and Caterpillar SR4 237 Kw alternator fitted.

2002

12,000 hour service by Caterpillar. Remanufactured head, turbo, injectors, etc.

2004

Removed from ship for complete rebuild of engine and alternator by Caterpillar in New Zealand.

Current hours: 310

Dive compressor

Bauer C-E3 with auto drain and remote filling station.

Custom built fuel tank monitoring system. Colour screen readout of all fuel tank contents.

Main bilge & Fuel transfer pump – DC motor driven pump set 1961

Motor – Smit Slikkerveer mg 30/16 (220 Vdc, 15 Kw)

Main bilge pump – Kuyl and Rottinghuis US3080

Fuel oil transfer pump – Houttun 4009510045

1995

DC motor tested & surveyed. Main bilge pump overhauled. Fuel oil transfer pump tested.

2002

Main bilge pump overhauled. Fuel oil transfer pump overhauled.

2005

DC motor overhauled at shore side facility.

Engine Room, Starboard Side

Water maker No.1 – HEM series 40 – new 1997 – 14,000 litres per day

Water maker No.2 – HEM series 40 – new 1997 – 14,000 litres per day

2001

8 x new membranes fitted. Both high-pressure pumps rebuilt.

2005

8 x new membranes installed with higher flow rate. Stainless steel fittings, high-pressure hoses and filters replaced. High-pressure pump fittings modified.

Fire & Auxiliary lube oil pump – DC motor driven pump set.

Motor – Smit Slikkerveer mg 30/16 (220 Vdc, 15 Kw)

Main fire pump – Kuyl and Rottinghuis HHE3340

Auxiliary lube oil pump – Houttiun 4109510045

1994

Main fire pump overhauled. Auxiliary lube oil pump overhauled.

1995

DC motor overhauled.

2002

Main fire pump overhauled. Auxiliary lube oil pump overhauled.

2004

Main fire pump overhauled.

2005

DC motor overhauled at shore side facility.

Stabiliser, starboard aft (please also see “E/R Center” & “Converter Room”) Vosper 1981.

1994

Servo valve overhauled.

1995

New stock bearings and stock overhauled.

1996

New ram seals.

1998

Servo valve overhauled.

2000

New rose bearings and pins.

2002

Rod end bearings and pins replaced.

2004 - November

Fin, shaft & pistons removed, inspected, repaired as necessary and reinstalled. Rod end bearings & pins replaced as necessary.

Cathelco raw water strainer anti-fouling and corrosion control system. 1999

No.2 Jacket & Sea water pump – DC motor driven pump set. 1961

Motor – Smit Slikkerveer MG 30/16 (220 Vdc, 15 Kw)

Sea water pump – Nijhuis CL 1-100270
Jacket water pump – Nijhuis CL 1-100205

1995

DC motor overhauled. Jacket water pump overhauled.

1997

Sea water pump overhauled.

2002

Jacket water pump overhauled. Sea water pump overhauled. Mounting bed and foundation steel work replaced.

2005

DC motor overhauled at shore side facility.

No.1 Jacket & Sea water pump – DC motor driven pump set 1961.

Motor – Smit Slikkerveer mg 30/16 (220 Vdc, 15 Kw)

Sea water pump – Nijhuis cl 1-100270

Jacket water pump – Nijhuis cl 1-100205

1999

DC motor overhauled. Sea water pump overhauled. Jacket water pump overhauled.

2002

Sea water pump overhauled. Jacket water pump overhauled.

2005

DC motor overhauled at shore side facility.

Starboard Main Diesel Alternator

1995

Caterpillar 3406b engine and Caterpillar SR4 237 Kw alternator fitted.

2002

12,000 hour service by Caterpillar. Remanufactured head, turbo, injectors, etc.

2004

Removed from ship for complete rebuild of engine and alternator by Caterpillar in New Zealand.

Current hours: 582

Engine Room Alarm System

Custom built based on Octagon systems SBS-150

2 x remote panels (crew area & bridge)

Fire Alarm Monitor

Thorn Firequest 2000

2002

Audio/visual alarms added in engine room, audio alarm added on guest deck, manual pull stations added in main galley & crew area.

220 volt DC rectifiers

4 x Santon 440 Vac / 220 Vdc 75 Kw

Bus “B” Transformer

72 Kw 440 Vac 208/110 Vac 3 ph. New 1987. Tested 1995, 2002 & 2004

Night Diesel Alternator
2000

Caterpillar 3306 engine and Caterpillar SR4 213 Kw alternator fitted behind a removable soundproof enclosure. Switchboard and engine installation certified by Lloyds.

2002

12,000 hour service by Caterpillar. Remanufactured head, turbo, injectors, etc.

November 2004

Removed from ship for complete rebuild of engine and alternator by Caterpillar in New Zealand.

High volume fans and ducting installed in sound enclosure.

Current hours: 919

Engine Room, Centre

Diesel oil purifier – Westphalia ON 2016 1961
1995

Complete overhaul and new bearings.

November 2004

Removed from ship & overhauled as necessary, reinstalled.

Lube oil purifier – Westphalia ON 2016 1961
1995

Complete overhaul and new bearings.

November 2004

Removed from ship & overhauled as necessary, reinstalled.

Switchboard – MaCarthur Switchgear
1995

Half of the existing DC switchboard was removed & a new 440 vac switchboard was fitted in its place. All three 440 vac alternators feed into this board.

2000

Modified for new night alternator.

November 2002 and December 2004

Cleaned and inspected.

Stabilizers – Vospers (please also see “Converter Room”, “ER Port Side” & “ER Starboard Side”)
1981

Vospers 4 fin control system & aft stabilizer hydraulic powerpack fitted
1995

New control system fitted. Upgraded from the original Muirhead control to a Vosper MK4, 4 fin control system.

1998

New hydraulic pump fitted.

2002

Heat exchanger replaced. Piping, valves & hoses serviced, modified & replaced as necessary.

Washer / dryer – Whirlpool heavy duty. New 2000. Repaired & serviced 2004

Boiler Room

Supplies domestic heating, domestic hot water & main engine pre-heating

1996

2 x Burnham V-78s oil fired water heaters (140 kw/480,000 Btu/hr total) with Beckett model AFG oil burners

2 x Grundfoss UMC 65-80 main circulation pumps

2 x Grundfoss UP 26-64 boiler circulation pumps

1 x Grundfoss up 2664F domestic heating pump

1 x Amtrol WH-10C commercial 80 gallon calorifier

1 x Techmar 252 two stage boiler and heating controller

2000

Aft Burnham V-78s boiler replaced.

2002

All lagging refurbished. Main and boiler circulation pumps replaced.

2003

Forward Burnham V78s boiler heat exchanger replaced.

Converter Room

Stabilizer, port forward. Vosper, 1981

Stabilizer, starboard forward. Vosper, 1981

(please also see "ER Center", "ER Port Side" & "ER Starboard Side")

1994

Servo valve overhauled.

1995

New stock bearings and stock overhauled.

1996

New ram seals.

1998

Servo valve overhauled.

1999

New stock / bearing overhauled.

2000

New rose bearings and pins.

2002

Rod end bearings and pins replaced.

2004 - November

Fins & shafts removed, inspected, repaired as necessary and reinstalled. Rod end bearings & pins replaced as necessary.

Forward stabilizer hydraulic power pack 1981

1998

New hydraulic pump fitted.

2002

Heat exchanger replaced.

2004 – November

Hydraulic pump, servo control valves, relief valves and pistons rebuilt. Heat exchanger, piping & valves serviced and replaced as necessary.

Air Conditioning

Custom system 1981.

1993

All hot and cold piping, new s/s drip trays, new condensate drains and air handling units replaced.

1994

New chilled water pumps. New make up air temperature controller & fan motor fitted.

1996

New condenser sea water pumps fitted.

1998

New compressors and expansion valves fitted.

2001

New No.2 compressor fitted. 4 new air handler units installed. Main air handler motor, fan & control replaced. New thermostat controls installed. Various s/s drip trays replaced.

2002

Condensers cleaned. Compressor No.1 replaced. Make up air handler motor replaced.

2005

Sun lounge air handler drip trays, drains and surrounds replaced.

Shore Power Transformer

Santon 75 Kw 380Vac – 480/440 Vac 3 Ph 50/60 Hz.1995.

Bus “C” Transformer

Santon 75 Kw 440 Vac to 208 / 120 Vac 3 Ph 50/60 Hz.1995.

Steering Flat and Workshop

Steering gear – Stork Jaffa twin ram hydraulic steering system. Fitted 1961

1994

New Anschutz autopilot fitted. Hydraulic rams and telemotor rams rechromed and new seals installed.

1995

Hydraulic pumps overhauled & new 440 vac motors fitted. Rudder stock removed for Lloyd’s survey.

2 x new autopilot telemotor hydraulic pumps fitted. New grease lubrication system fitted.

2004

Autopilot motors rebuilt.

Welding converter – Overhauled 1994 (AC welder)

TIG welder – New 1996

Drill press – New 1997

Lathe – New 1997

Bench grinders – New 2004

Fore Ship

Bow thruster

1999

Upgraded to 200 HP. A Wesmar DPC 200 counter-rotating thruster unit was fitted to the existing thruster tunnel, controlled by a Danfoss VLT 6175 frequency controller.

2002

Disassembled, inspected and serviced.

November 2004

Disassembled, inspected and serviced. Power and control cards replaced in VLT.

MSD – Hamann Wassertechnik. Sewage treatment plant, USCG certified.

Deck Equipment

Cranes

2 x Thrige – Titan SRW 10-22. Installed 1981

1995

New slew rings.

1996

New s/s hydraulic lines.

2000

Total rebuild including new winch, rechromed cylinders and new seals, overhauled slew motor and slew ring. New cables. New pivot bushes where required. New Danfoss proportional hydraulic control system. New remote controls.

2002

Rechrome luff cylinders, new cables, replace 2 fixed pipes on starboard side, new control wiring.

2004

Complete rebuild of starboard crane. Remove, disassemble, inspect and modify as necessary.

Rechrome luff and telescopic rams. Rebuild slew motor, inspect winch and hydraulic controls. Paint, reassemble, install and load test for Lloyd's.

2005

Complete rebuild of port crane using the same parameters as above.

Aft Deck Capstan

Smit – 55 Kw DC motor driven. Installed 1961. Motor surveyed 1996.

Deck Lights

6 x Aqua Signal deck floods

2 x Emergency lights at muster stations

26 x General deck lights

8 x Aqua Signal navigation lights

Bridge windscreen wipers

5 x Seematz with Seaclear demisters. Rebuilt 2003

Emergency Generator (port deck locker)

January 2005

A complete new Cayman Islands / Lloyd's approved system was installed
1 x Northern Lights M984K, 33kw Lloyd's type approved emergency generator
1 x fuel tank with emergency shut-off & external filling & venting
1 x main engine intake air shut-off
1 x 17cfm, 6 bar air compressor
1 x 3 phase 208 Vac 60Hz switchboard
1 x 208 VAC to 220 Vdc rectifier
1 x Navigation lights main power failure switching unit
2 x Victron battery chargers with Bep monitor

Ground Tackle

Windlass

Giessens type EAH 3A 26 Kw DC. DC Motor driven. Installed 1961.

1996

Removed from deck, totally dismantled, shot blasted, dip galvanized and remounted on new deck sub-base. Electric motor overhauled.

2002

Chain rollers removed, inspected & reinstalled. Chain locker audio gauged and painted.

November 2004

Removed from deck, disassembled, inspected, shot blasted & painted. Complete new base fabricated. Electric motor and controls overhauled. New brake linings and disk installed. Chain locker audio gauged & painted.

Chains

1997

New chains fitted, 5 shackles per side.

2002

Removed and inspected.

November 2004

Inspected, measured & end for ended. Surveyed by Lloyd's.

Anchors

2 x Stockless type. 1,100kg each. Installed 1980.

1996

Shot blasted and hot dipped.

1998

Overhauled

June 2004

Switched port & starboard. Kettner links replaced.

November 2004

Starboard anchor replaced with spare. Both anchors surveyed by Lloyd's.

Life Saving and Safety Equipment (exceeds SOLAS, Lloyd's & Cayman Islands requirements)

Fire Suppression Systems

Engine room, boiler room, stack, shaft alley & workshop:

NOVAC 1230 Lloyd's approved system with 5 cylinders containing 532kg of chemical & activated from controls near the starboard well deck door.

Remaining areas:

52 portable fire extinguishers (9 Water, 16 CO2, 6 Halon, 8 Dry Powder, 13 Foam)
1 x main fire pump
2 x portable AFFF foam application systems
7 x fire hydrants
11 x fire hoses
7 x hose nozzles
2 x fire blankets
1 x portable diesel powered fire/dewatering pump (Yanmar engine driving a Pacer pump)

SCBA equipment

2 x Magnum ISI SCBA systems with 4 air bottles
2 x Close proximity fireman outfits
5 x Ocenco M20.2 EEBDs

Life rafts

1 x 16 person DSB with SOLAS A pack. Date of manufacture: August 2003
1 x 16 person DSB with SOLAS A pack. Date of manufacture: June 2003
1 x 15 person DSB with SOLAS A pack. Date of manufacture: March 2000
1 x 16 person, Elliot with SOLAS A pack. Date of manufacture: April 2003
1 x 8 person, BFA with ORC pack

Immersion Suits

23 x Parkway-Imperial immersion suits

Survival Suits

29 x Mustang survival suits

Lifejackets

70 x lifejackets, various models & sizes

All Other Life Saving Appliances – Flares, safety signals, line throwers, life rings, strobes, etc meet or exceed SOLAS, Lloyd's and Cayman Islands requirements.

Medical Equipment

Supplies onboard meet or exceed MSN 1768
1 x SeQual Integra Oxygen Concentrator
1 x Survivalink AED

Tenders

1 x 28ft Rayglass RIB with cabin 1999
1 x Yanmar 300 hp turbocharged diesel engine with Bravo 3 stern leg
1 x Furuno color GPS plotter sounder
1 x Furuno SSB FS-1552
1 x Furuno radar FR-1621
1 x Icom M502 VHF with private channels
1 x Pioneer stereo DEH-246

1 x 25ft Rayglass RIB with center console 2000

1 x Yanmar 250 hp turbocharged diesel engine with Bravo 1 stern leg
1 x Furuno GP-1650F colour GPS with plotter & echo sounder
1 x Icom M502 VHF with private channels

1 x 18' Zodiac MK5-HD. Standard tender (blue/black) 1999.
1 x 18' Zodiac MK5-HD. Rescue boat (orange) with all required equipment 1999
3 x Yanmar 35 hp diesel outboards. 1 x 2003, 2 x 1994 (one spare)

Sports Equipment

2 x Ocean kayaks
2 x Caribe kayaks with clear bottoms
6 x scuba gear sets
1 x Laser
1 x Seadoo GSX Limited, personal watercraft 1999
Water skis / kneeboard
Fishing equipment

Refit Information

May 1993 to May 1994 – Seattle, Washington
Major refit, including ice strengthening.

September 1994 to November 1994 – Newport, Rhode Island & New York
Mini refit on main engines, stabilizers & turbochargers.

April 1995 to February 1996 – Auckland, New Zealand
Major refit. Included a complete Awlgrip paint job. Lloyd's five-year special survey
New Caterpillar generators, new AC electrical panel, new E/R exhaust, new fans & ducting to triple
original air change rate. All tanks (42 in total) inspected, audio gauged and repaired where necessary.

May 1997 to August 1997 – Jacksonville, Florida
Generators, extension to sun deck, resurface decks, new watermakers, sewage, pipe work, guest cabins.
Main engine maintenance.

December 1998 to March 1999 – Auckland, New Zealand
Major refit and Awlgrip exterior paint. Upgrade bow thruster, overhaul starboard main engine. Interior
re-decorating. New tenders and survey.

March 2000 to June 2000 – Auckland, New Zealand
Extensive refit. Replaced teak decks on main, boat and bridge deck. Extensive repaint. Port main
engine overhaul, new night alternator installation. New washer and dryer installation, crane overhaul,
stabilizer ram rose joint bearing renewal.

March 2001 to June 2001 – Genova, Italy
Extensive refit. Replaced interior in all Owner & guest areas after stripping back to bare floors,
overheads & bulkheads. Included moving various partitions, walls & doors. Major steel work on

flybridge. Replaced teak decks on flybridge & installed new teak decks on aft & side decks. New Inmarsat system, radar, satellite TV and instrument systems. Replaced gym windows & mounting system. Automatic sun lounge door installed. Extensive paintwork on accommodations & exterior varnish work reconditioned. Steam cleaned and painted bilges, cleaned and painted ME intake air ducting. Tender fuel transfer pump installed. All new canvas work. (full list available)

October 2001 – Genova, Italy

Paint blue on topsides and mast. Minor carpentry & interior work. Install exhaust rice washing system. Rebuild main engine turbochargers.

September 2002 to October 2002 – Jacksonville, Florida

Haul ship, clean, survey & repaint bottom. Repaint boot strip, funnel & lower mast. Renew varnish work as necessary. Service bow thruster, all thru hulls, valves & sea chests. Service generators. Upgrade & service refrigeration & air conditioning systems. Rebuild ME sea water (x2), fresh water (x2), lube oil, gear box & fuel transfer pumps. Replace No 2 sea water/fresh water pump base & support structure. Inspect, test & survey air receivers. Back up fuel transfer pump installed. Miscellaneous pipe work. Upgrade fire alarm system & install an “at sea” newspaper delivery system. (full list available)

November 2003 to January 2004 – Subic Bay, Philippines

Main engine and generator work as listed previously. Complete rebuild of starboard deck crane. Air conditioning & refrigeration systems upgraded. Fabricated new battery & storage boxes for Zodiacs. Painted port & starboard well decks, external sides of bulwarks & rub rails. Painted bridge deck dodger. Annual survey.

May 2004 to June 2004 – Cairns, Australia

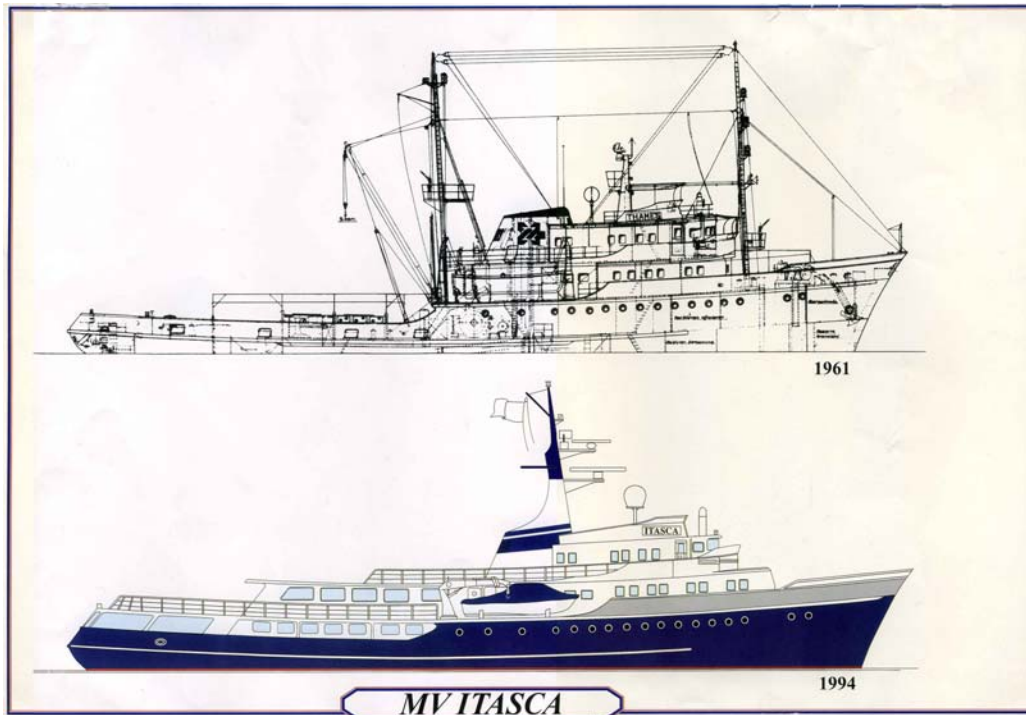
AIS & Fleet-77 systems installed. Navigation pc replaced & ECDIS software upgraded. Gyro serviced & sphere replaced. Miscellaneous carpentry and varnish work. 28’ tender engine and stern leg rebuilt. Autopilot motor rebuilt.

September 2004 to January 2005 – Auckland, New Zealand

Extensive refit. Haul ship, clean, survey & repaint bottom. Access hole cut in starboard side to facilitate engineering work. Starboard main engine, main alternators, night alternator and emergency generator work as listed above. Propeller, shaft windlass, starboard deck crane & ground tackle work as listed above. Remove all 4 stabilizers & shafts, rebuild as necessary. Install engine room fixed NOVAC system. Various pipe work and hull plating replaced as necessary. Inspected and cleaned tanks. All 6 large 220 Vdc pump motors removed, serviced & repaired at shore side facility. Complete repaint of topsides (Awlgrip). Complete repaint of Owner & boat deck accommodations, heli-deck and foredeck (Awlgrip). Extensive varnish work. New sun lounge lights added. Annual survey & 80% of Lloyd’s special 5 year survey completed. (full list available)

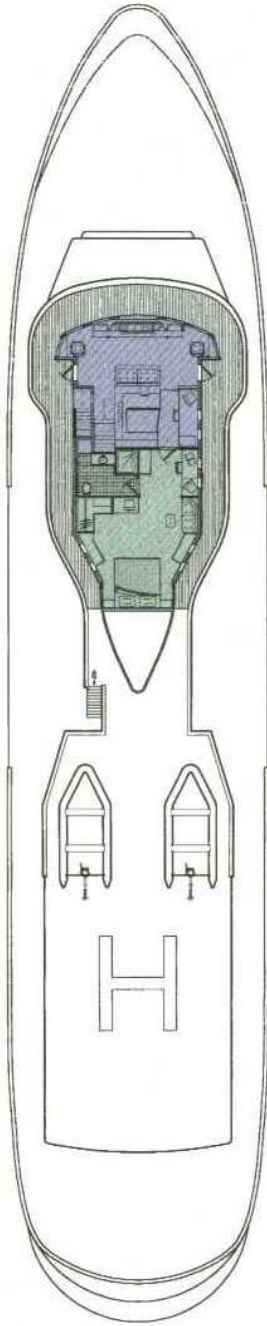
During the current period of ownership, from December of 2000 until today, no expense has been spared in bringing Itasca up to A1 “yacht” condition and maintaining it as such. Over a 4 ½ year time span, two major refits and two minor refits have been completed as well as a full inventory of spares assembled onboard.

This is a very condensed list, complete maintenance and modifications records are kept onboard.

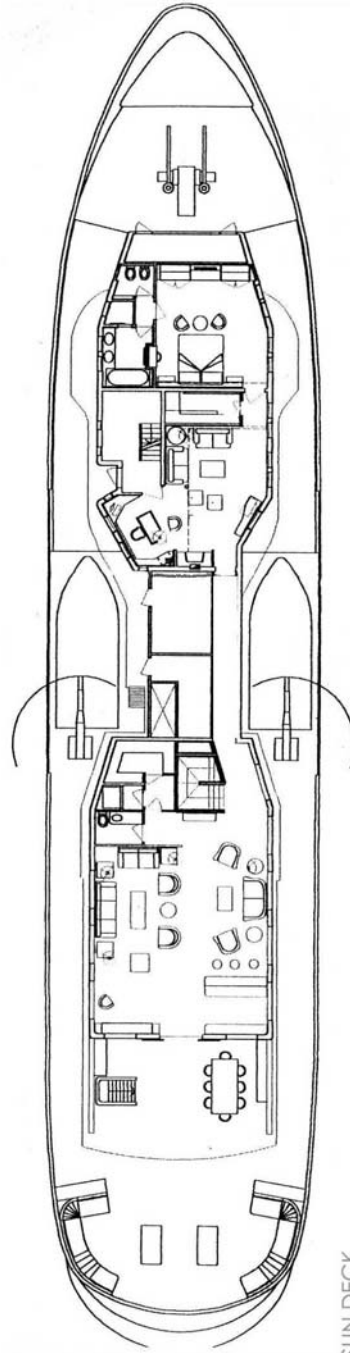


Asking Price : € 18.790.000

Lying : Madagascar



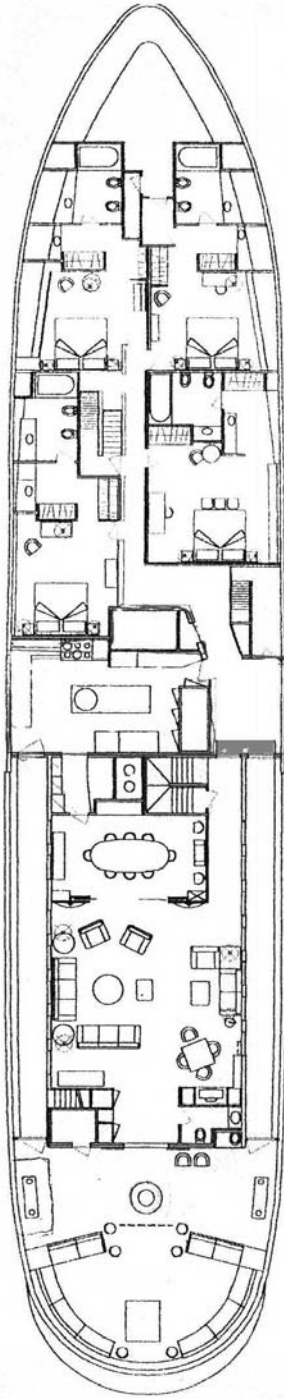
BOAT DECK



SUN DECK

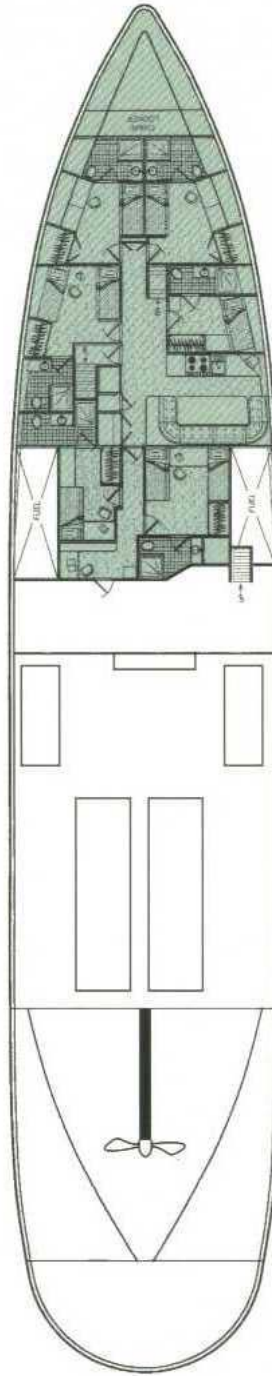
lounges (sun - main)
sup. m²170

owner's area
sup. m²70



MAIN DECK

guess (sun - main)
sup. m² 160



LOWER DECK