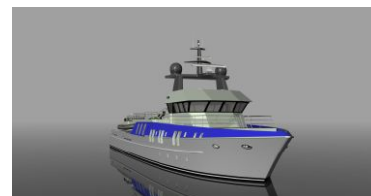


175 ft 2000 Breaux Brothers Fast Xplorer Yacht, Xplorer Fast Yacht

US\$12,500,000 Tax: Paid, United States

Larose, Louisiana, United States



Boat Details

Make:	Breaux Brothers	Class:	Mega Yacht	Berths:	7
Model:	Fast Xplorer Yacht	Hull Material:	Aluminum	Heads:	4
Year:	2000	Drive Type:	Direct Drive	Fuel Type:	Diesel
Length:	175 ft	Beam:	32 ft	Max Speed:	29 kn
Price:	US\$12,500,000	Boat Location:	Larose, Louisiana, United States	Max Draft:	9 ft
Condition:	Used	Name:	Xplorer Fast Yacht		



All Ocean Yachts | All Ocean Yachts

Fort Lauderdale, Florida, United States

Tel: **(954)671-0107** Fax: **(954) 636-3798**

josephineb@alloceanyachts.com

www.yachtworld.com/alloceanyachts

Description

U.S. built to ABS and US Coast Guard commercial specs. Ready for conversion for fast explorer yacht (yacht support vessel is a separate listing). Top speed 29-KNOTS, with economy cruise at 12 knots at 50 gph. Shallow draft, CAT power, under 500 GT. Configured for your mission in a U.S. shipyard. Up to 5,000 nm range with long endurance. Dynamic Positioning (DP2). Bring all the Toys: Submersible or ROV's, ATV's, bikes helicopter, tenders. Interior spaces for: Walk-in refrigeration, gym, etc. Price is for converted vessel.

See video on The Yacht Channel on YouTube.

We are tracking more than 40 commercial vessels in Europe and U.S. available for conversion as yacht support or expedition vessels. We have inspected most of these and have surveys on several. Please get in touch to discuss your project mission.

Information & Features

2000 CAT 3516B Twin Speed (Engine 1)

Type:	Inboard	Power:	2000 hp
Fuel Type:	Diesel		
Drive Type:	Direct Drive		

2000 CAT 3516B Twin Speed (Engine 2)

Type:	Inboard	Power:	2000 hp
Fuel Type:	Diesel		
Drive Type:	Direct Drive		

2000 CAT 3516B Twin Speed (Engine 3)

Type:	Inboard	Power:	2000 hp
Fuel Type:	Diesel		
Drive Type:	Direct Drive		

Dimensions

LOA:	175 ft
Beam:	32 ft
Max Draft:	9 ft

Speed

Cruising Speed:	18 kn
Max Speed:	29 kn
Range:	5000 nmi

Tanks

Fuel:	2,000 gal Aluminum
Fresh Water:	1,000 gal Aluminum

Accommodations

Single Berths: 7
Heads: 4

Other

Flag Of Registry: United States
Designer: Grant Maughan
Builder: Breaux Brothers

Electrical Equipment

- Generator

Electronics

- | | |
|----------------------------|-----------|
| - Depthsounder | - Compass |
| - Radar Detector | - GPS |
| - Wind Speed and Direction | - VHF |
| - Computer | |
| - TV Set | |
| - Navigation Center | |
| - Autopilot | |

Inside Equipment

- | | |
|--------------------|----------------|
| - Dishwasher | - Hot Water |
| - Bow Thruster | - Refrigerator |
| - Washing Machine | - Deep Freezer |
| - Microwave Oven | |
| - Marine Head | |
| - Air Conditioning | |
| - Heating | |

Machinery

Main Engines
Three (3) 3516B Twin Speed, 6,000 BHP
Auxiliary Engine (1) CAT C9, 503 BHP

Generators - Two (2) CAT 3406; 75 kW each

Fuel Burn

Fuel burn with generator:

6 kts - 42 gph
7 kts - 45 gph
8 kts - 49 gph
9 kts - 57 gph
10 kts - 67 gph
11 kts - 78 gph
12 kts - 88 gph
13 kts - 99 gph
14 kts - 112 gph
15 kts - 130 gph

Electronics

Two (2) Radars,
Two (2) VHF Radios,
Sea SBB (Single Sideband Radio),
Depth Sounder,
GPS,
Navtex Receiver, Necoder,
Autopilot,
406 EPIRB

Working Deck

Open Deck: 98 ft. x 30 ft. (29.87 m x 9.14 m)

Cargo Capacity: 300 LT (304.81 MT)

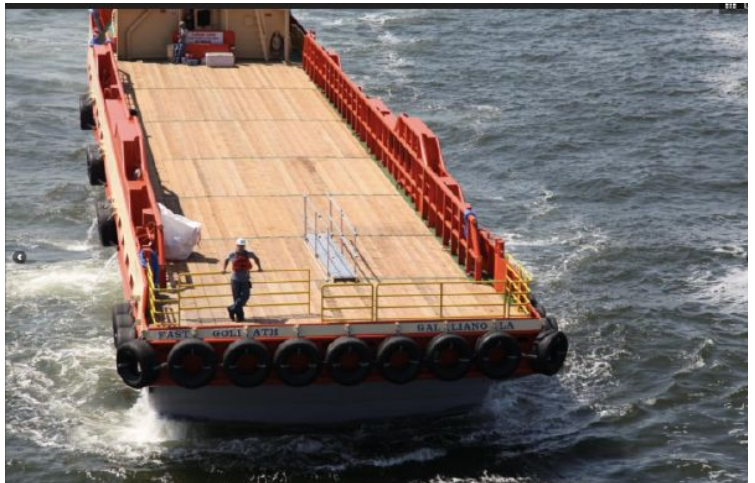
Accommodations

Currently fitted for 7 crew.

Main deck can accommodate 8 more crew, or 2 guest suites within existing superstructure.

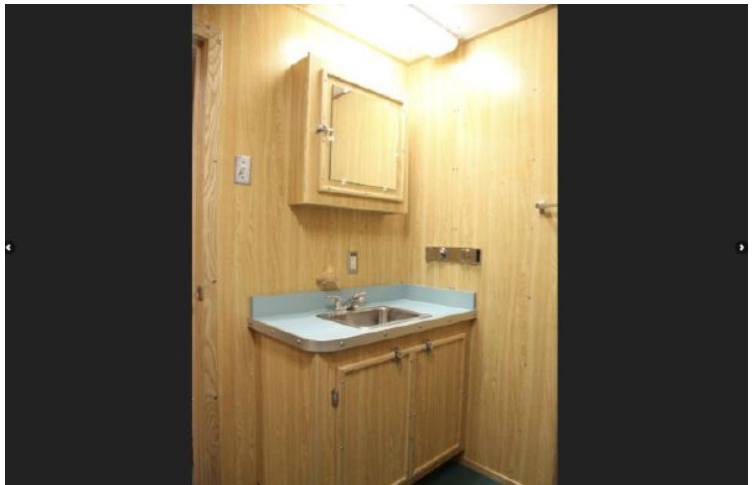
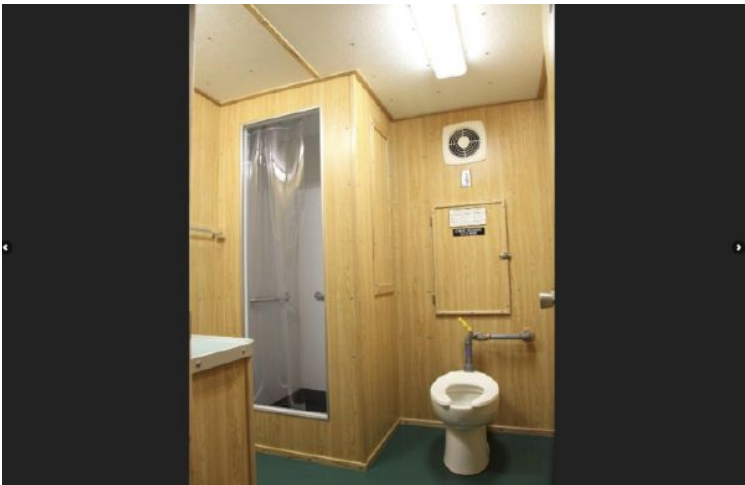
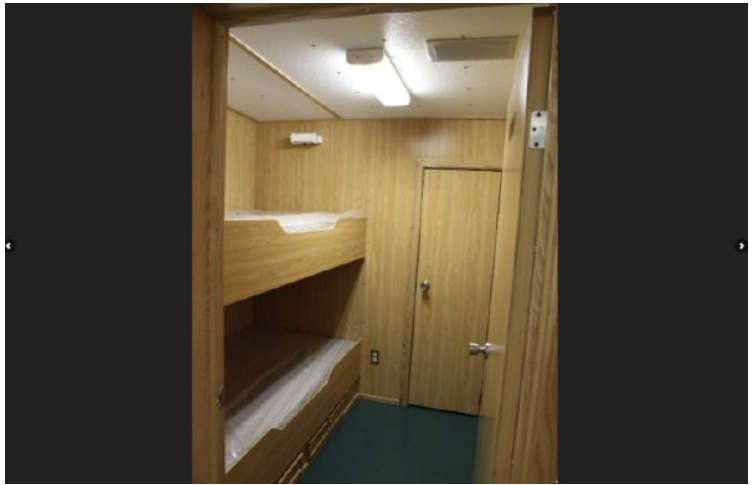
Disclaimer

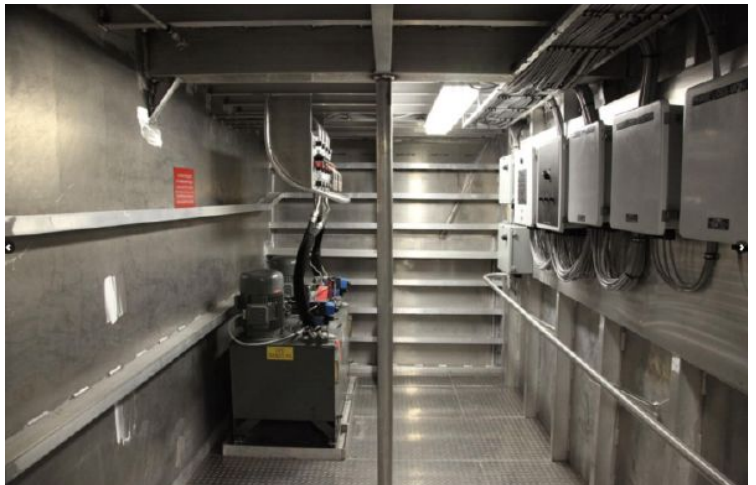
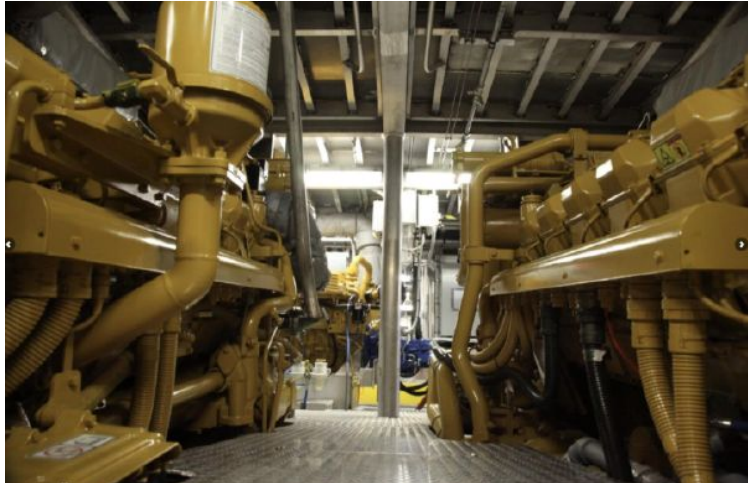
The Company offers the details of this vessel in good faith but cannot guarantee or warrant the accuracy of this information nor warrant the condition of the vessel. A buyer should instruct his agents, or his surveyors, to investigate such details as the buyer desires validated. This vessel is offered subject to prior sale, price change, or withdrawal without notice.

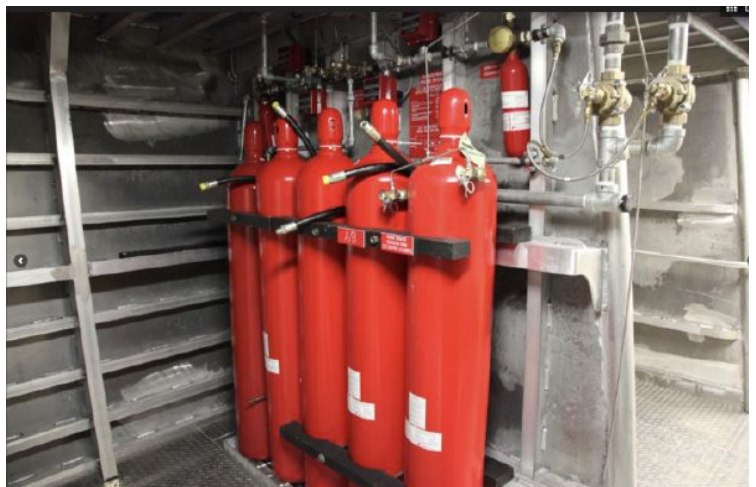
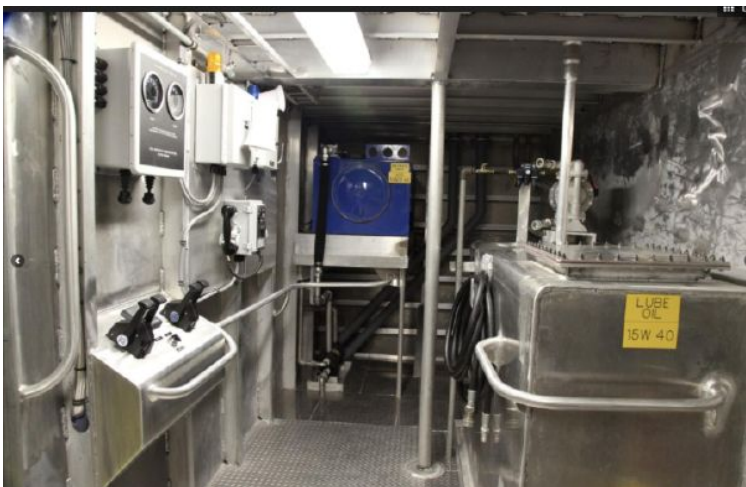


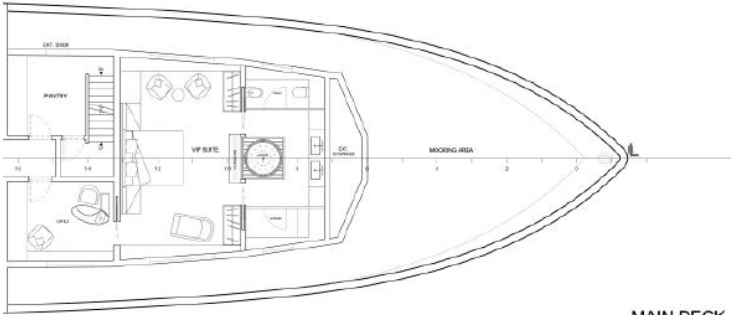




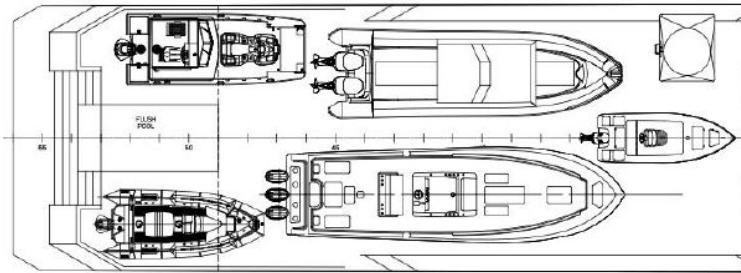
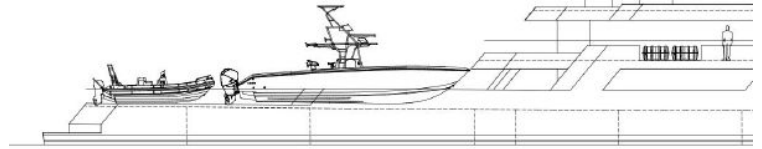








MAIN DECK



ABOVE TANK TOP