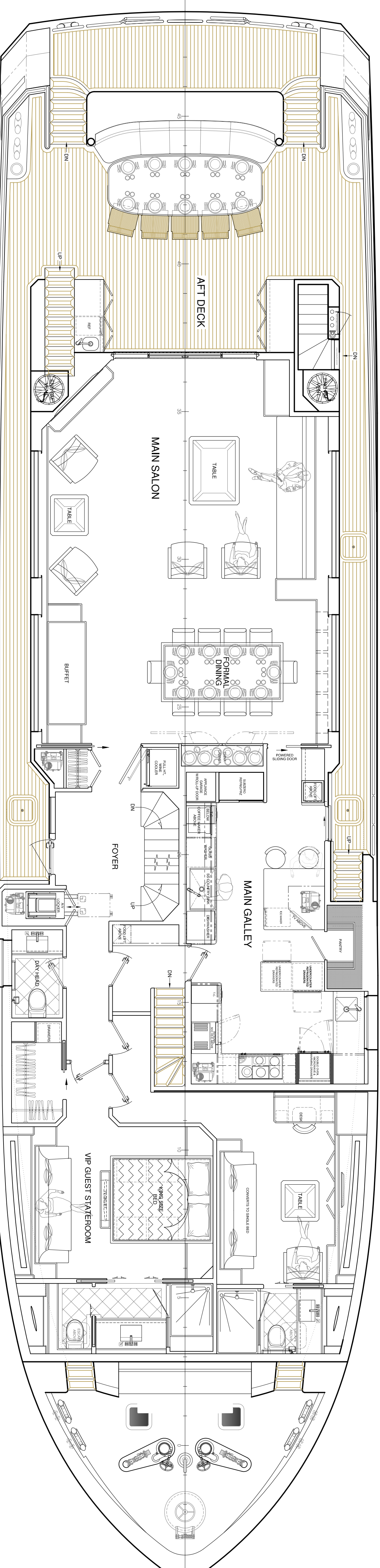
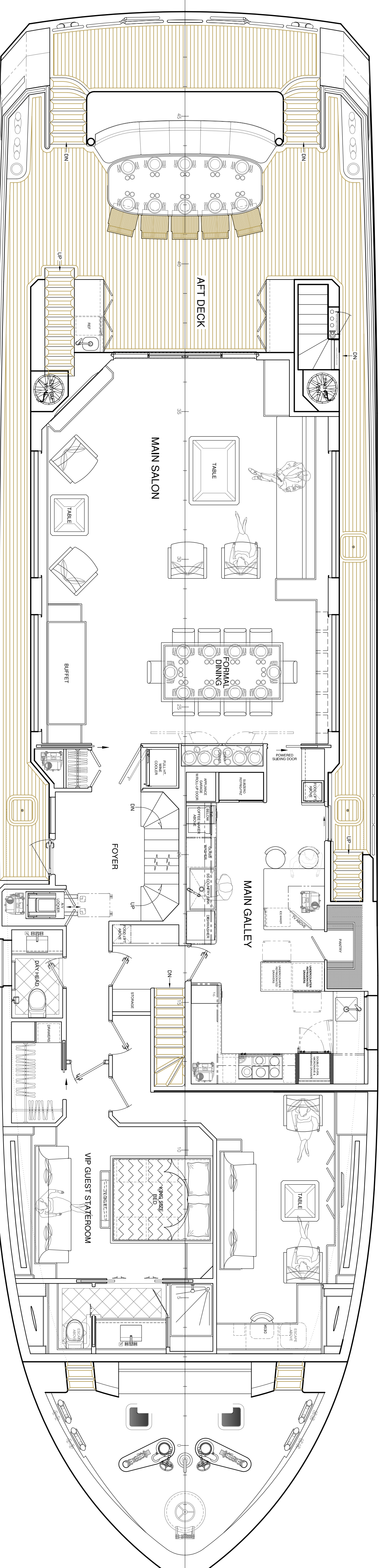


MAIN DECK MASTER ON DECK



MAIN DECK OFFICE/ LOUNGE WITH HEAD



MAIN DECK OFFICE/ LOUNGE WITHOUT HEAD

PREPARED FOR MR. GUIDO COSTANTINI

This drawing, design concept, and specifications are the exclusive property of
OVERING YACHT DESIGNS, LLC ©2019
 and are furnished on a confidential basis with an expressed understanding that they will not be copied
 in any manner, used for manufacture, sold, transferred, nor used to the detriment of said firm without
 written permission. The recipient further agrees not to disclose these contents hereon to any other parties
 except for those specific purposes for which this drawing was issued.

SCALE: 1:50
 DRAWN BY: JPO
 HULL NO.:

DATE: 11/19/2019
 CK'D BY: JPO
 JOB NO.: 0371

DWG. NO. C02-2
 SHT 2 OF 3
 REV -

32.5M L.O.A X 7.92M BEAM X 2.6M DRAFT
 32 METER EXPLORER
 GENERAL ARRANGEMENT

ALL OCEAN YACHTS
 APPROVALS
 BUILDER
 CLASS

OVERING YACHT DESIGNS, LLC
 13817 La Cala Street • Ocean Springs, MS • 38964
 EMAIL: info@overingyachts.com WEBSITE: www.overingyachts.com
INTERNATIONAL YACHT AND SHIP DESIGN SINCE 1989

16 15 14 13 12 11 10 9